

Monthly Mariner's Update for Coastal Virginia Offshore Wind	Date of Applicability	01 November 2024
	Issue:	11/24
	Revision:	00

***The goal of the Monthly Mariner's Update is to give a high-level overview of ongoing and planned near-term construction activities and the vessels involved. Questions regarding construction operations are welcome, preferably well in advance of each construction activity. These questions and comments can be directed [here](#).***

- ***Weekly updates are published in the USCG Local Notice to Mariners which can be found [here](#).***
- ***Weekly updates to the published USCG Light List marking turbine locations can be found [here](#).***
- ***Previous issues of the Mariner's Update and additional resources can be found [here](#).***

## **Project Background Information**

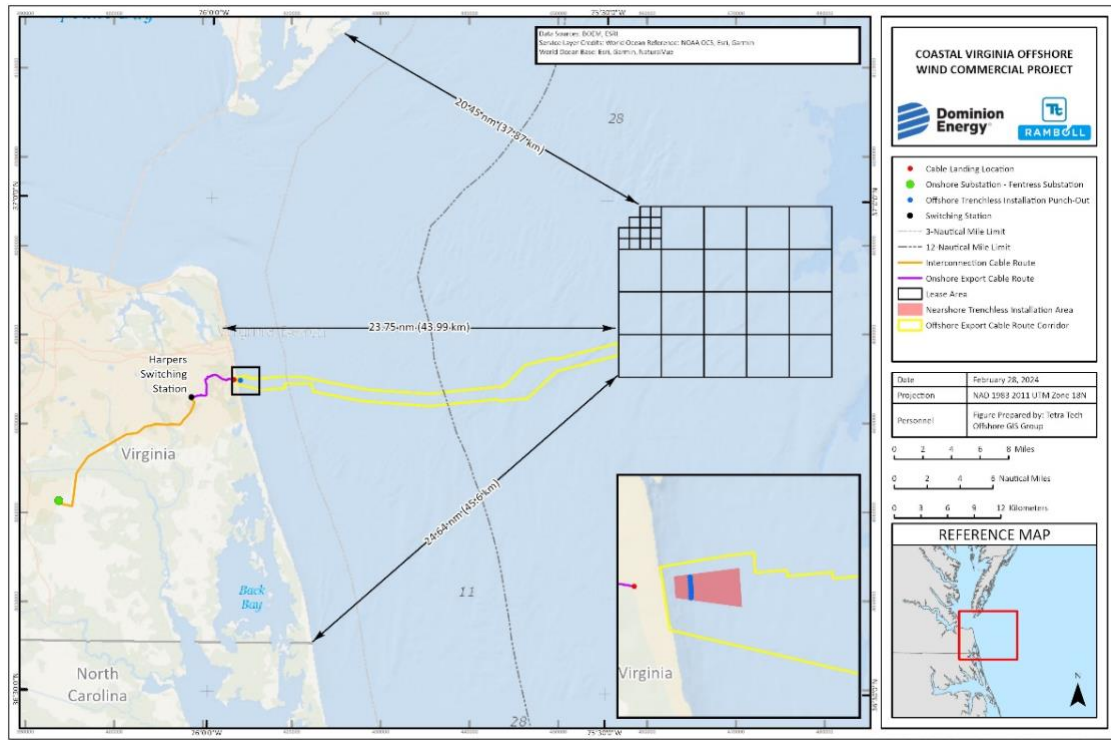
***Offshore construction work for Coastal Virginia Offshore Wind (CVOW) commenced in February 2024 with relocation of Munitions of Explosive Concern (MECs). Monopile foundation installation began in May 2024 and subsea cable installation activities began in August 2024.***

Dominion Energy will construct, own and operate the Coastal Virginia Offshore Wind (CVOW) Project (hereinafter referred to as the Project). The Project is located in the Commercial Lease of Submerged Lands for Renewable Energy Development on the Outer Continental Shelf Offshore Virginia (Lease No. OCS-A 0483), with buried subsea cables connecting CVOW to shore. The purpose of this Project is to provide 2.6 gigawatts of clean, reliable offshore wind energy to our customers, while providing substantial economic and environmental benefits to the Commonwealth of Virginia.

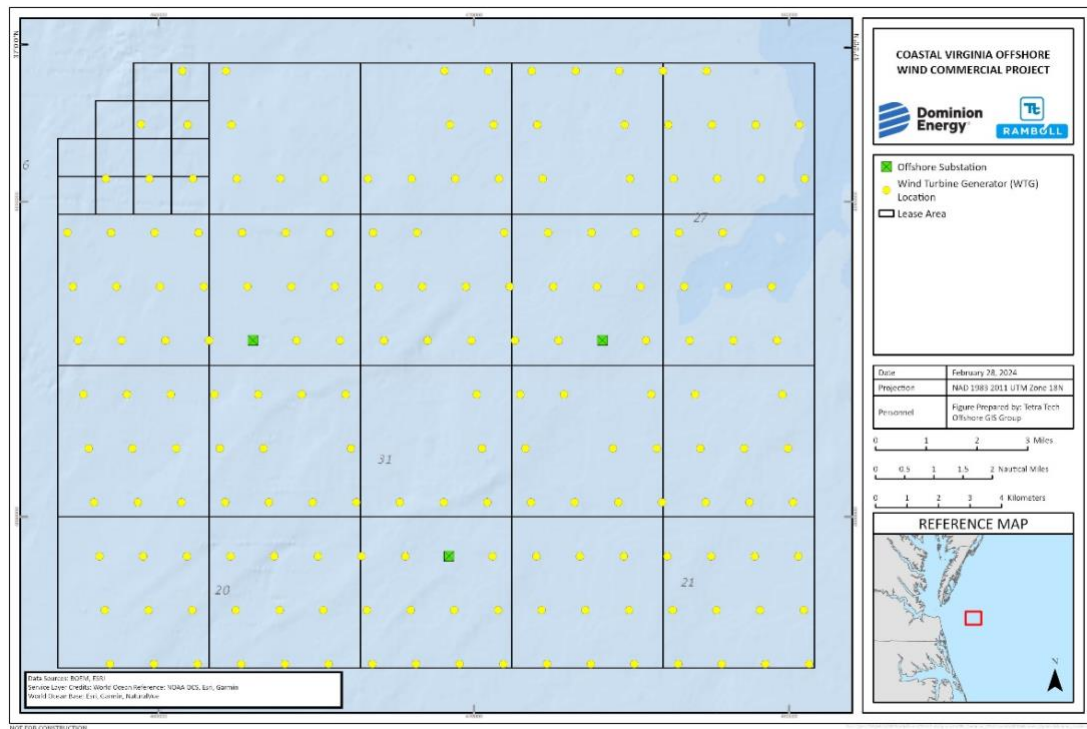
Offshore components of the Project will consist of the following:

- 176 Wind Turbine Generators (WTGs), each with a capacity of 14.7 megawatts, and associated monopile foundations;
- Three (3) Offshore Substations (OSS);
- Approximately 231 miles (372 kilometers) of total length of Inter-Array Cables (IACs) in the CVOW Lease Area; average IAC length of 5,868 feet (1,789 meters) between WTGs and connected to OSSs; and
- Nine (9) buried submarine high-voltage alternating-current Offshore Export Cables (OECs), approximately 350 miles (563 kilometers) of total length, connecting the OSSs to shore at the State Military Reservation (SMR) in Virginia Beach, VA.

The offshore project components, including the WTGs, OSSs, IACs and OECs, will be located in federal waters in the OCS-A 0483 Lease Area (Lease Area). Portions of the OECs will also be located in Commonwealth of Virginia waters (within three miles of shore).



Boundary of CVOW project



WTG and OSS Layout

CVOW GIS Shapefiles of the project area and export cable corridor are available [here](#) for download.

## Work planned for the period of November 1, 2024, to November 30, 2024

- The M/V FLINTSTONE will continue to install rock scour protection at the installed foundation locations.
- The CLV LIVINGSTONE will conduct OEC installation within the cable corridor and into the Lease Area, beginning approximately 12-nautical miles offshore.
- Multiple large project components will continue to arrive and be staged at the Portsmouth Marine Terminal.
- Ongoing fisheries resource studies in and around the Lease Area.
- WTG monopile installation has paused for the duration of the North Atlantic right whale (NARW) migration period and will resume in May 2025.

### **CVOW Marine Coordination Center**

The CVOW project established a shoreside Marine Coordination Center (MCC) to monitor and coordinate all offshore activities related to project construction and operations. The MCC is manned 24 hours a day, 7 days a week and can provide further project details if required.

<b>Marine Coordination Center Contact Information</b>	757-366-7000 (desk)
	757-731-8307 (cell)
	Email: <a href="mailto:CVOWOps@dominionenergy.com">CVOWOps@dominionenergy.com</a>

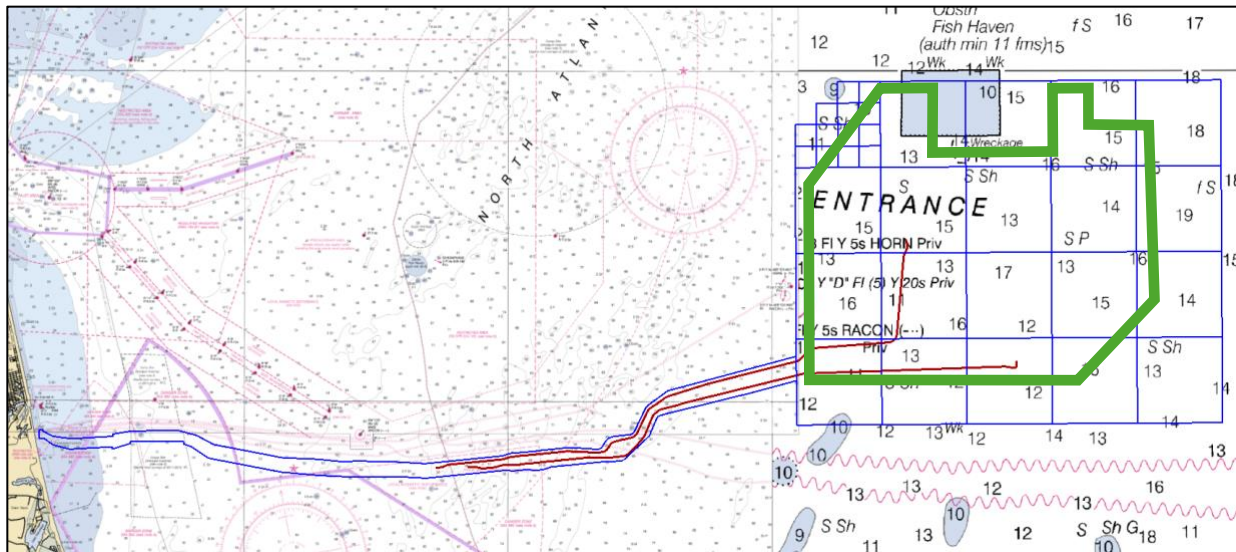
### **Offshore Installation Activities**

**The installation (pile driving) operations of monopiles for the WTGs and pin piles for the OSSs has paused from November 2024 through April 2025; the duration of the NARW migration period.** To date, seventy-eight (78) monopile foundations have been installed and the four (4) pin piles for one (1) OSS have been installed. The installation of rock scour protection at the base of the monopile foundations will continue in November 2024 with the M/V FLINTSTONE.

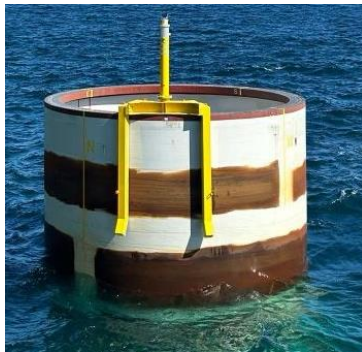
Through the remainder of 2024 and into 2025, OEC cable installation and associated support operations (e.g., cable protection at cable crossings) will continue. The Cable Lay Vessel (CLV) LIVINGSTONE will be supported by the Atlantic Ocean for these operations.

For the duration of these operations, we will continue to have safety vessels deployed in the area. These vessels will be a rotation of commercial fishing vessels, which may consist of the Capt. Danny, the Alliance, the Atlantic Bounty and others.

The below image is a depiction of the monopile installation to date. The area marked in green indicates the area of completed monopile installations. Specific installation locations are provided in a table at the end of this publication.



## Marine Lighting on Monopile Foundations



Once monopiles are installed in the seabed, quick-flashing yellow marine navigation lights will be installed and in operation from sunset to sunrise. Updates to the lighting installations will be published in the USCG Local Notice to Mariners and USCG Light List.

Monopile foundations extend 15 feet above the sea; extreme caution should be exercised when operating in the area. For up-to-date status of foundation installations, please reference the current USCG Local Notice to Mariners.

## Rock Placement Around Foundations

The M/V FLINTSTONE has resumed rock scour protection installation activities at the base of the installed monopiles, which will continue through the November timeframe. This activity is planned to continue through the end of January 2025 before pausing once again.

## USCG Safety Zone in Effect at Installation Sites

The U.S. Coast Guard has established 179 temporary 500-meter safety zones around the construction of 176 wind turbine generators and three (3) offshore substations in Federal waters on the Outer Continental Shelf, east northeast of Virginia Beach, Virginia. This action is necessary to protect life, property and the environment during construction of the foundations and the subsequent installation of the turbine components, from May 1, 2024, to May 1, 2027. When enforced, only attending vessels and those vessels specifically authorized by the Fifth Coast Guard District Commander, or a designated representative, are permitted to enter or remain in the temporary safety zones. Each of the 179 temporary safety zones will be enforced individually, for a period lasting approximately 48 hours, as construction progresses from one structure to the next.



## Buoy Installations Supporting the Monopile Installation Activities

The acoustic measurement, acoustic monitoring, and meteorological buoys deployed in the lease area during pile driving operations have been decommissioned and removed from the site. When monopile installation activities resume in May 2025, these buoys will be redeployed and their locations shared. Reference previous CVOW Mariner Updates and USCG Local Notice to Mariners for more details on locations and timelines.

---

## Seabed Preparation and Cable Installation

Two (2) of the nine (9) deep water sections of export cables have been trenched and installed, totaling nearly 70 km in length. Each cable is secured at either end by a mushroom anchor. The OECs remain exposed where they cross the existing, charted subsea telecommunications cables. We ask that all mariners be mindful of these cables and avoid anchoring or any other seabed impacting activities in the vicinity of the cables.

The Cable Lay Vessel (CLV) LIVINGSTONE will resume OEC installation activities in November 2024. These activities will take place within the identified cable corridor, beginning at a position ~12-miles offshore, and into the lease area.

---

## Port Operations

During the month of November, large components such as monopiles and transition pieces will continue to arrive and be staged at Portsmouth Marine Terminal.

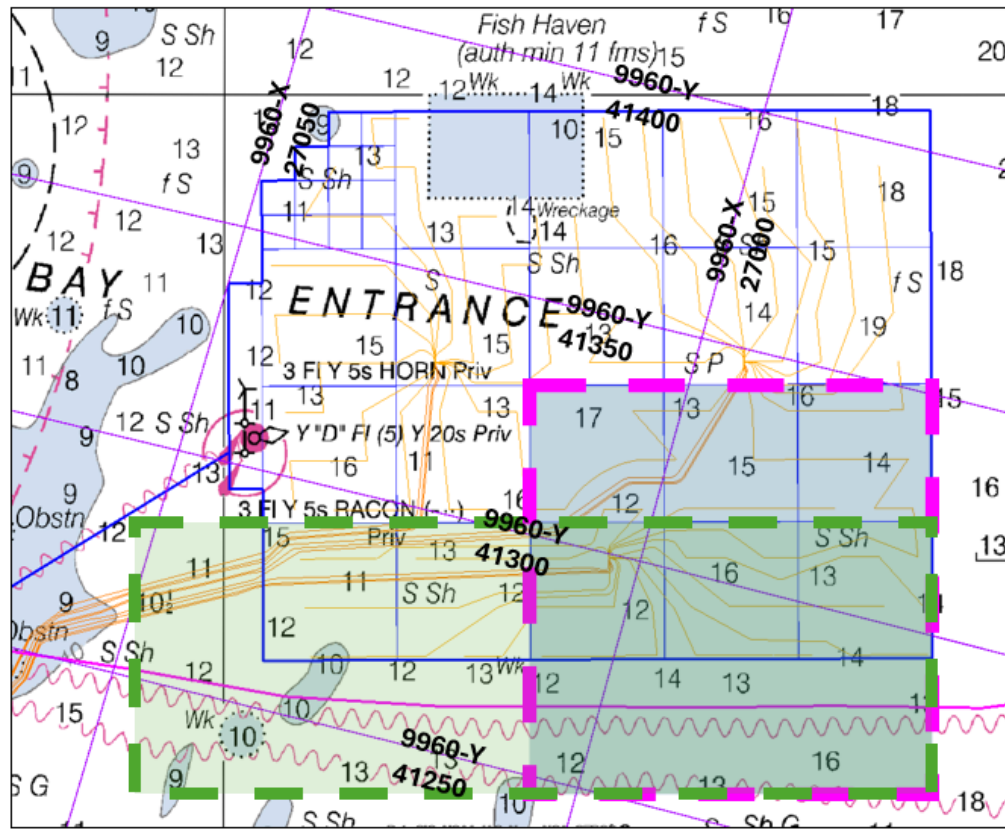
Total Components Delivered to Portsmouth Marine Terminal	
Monopile Foundations	104
Transition Pieces	52
Offshore Substation Pin Piles	12
Pin Pile Templates	1



## Fisheries Resource Characterization Studies

Dominion Energy continues working with the Virginia Institute of Marine Science (VIMS), the Virginia Marine Resource Commission (VMRC), and commercial fishermen to study Black Sea Bass and Channeled Whelk in and near the Project area, especially the areas shown in the chartlet below. The use of new acoustic release device technology avoids the need for vertical lines and marker buoys in the water.

- **Black Sea Bass:** The study consists of eight (8) strings of ventless traps with 6 traps per string. Sampling once per month, with a 48-hour soak and acoustic release buoys are utilized to recover the gear. The chart below displays the study area, which includes locations south of the Lease Area. The study is currently taking place utilizing the VIMS R/V Bay Eagle and will continue throughout 2024. The study area is outlined in pink below.
- **Channeled Whelk:** The study uses eighteen (18) strings of seven (7) pots, a 48-hour soak time and recovery by acoustic release buoys. This cooperative study will be completed in partnership with local commercial whelk fishermen, and activities will continue throughout 2024. The study area includes the southern portion of the CVOW lease site (with future turbine locations) and a control area outside the Lease Area. The entire study area is outlined in green below.
- **Atlantic Surfclam:** The final report for the Atlantic Surfclam surveys that were conducted in June of 2023 has been published and is available on the CVOW Project Website [here](#). This survey was a collaborative effort between VIMS, Rutgers University, VMRC, and Dominion Energy.



### Recreational Fisheries and Public Access

- Access to the lease area for recreational activities is unrestricted unless construction activities are active.
- If construction activities are active, a **500-meter standoff distance is requested**.
- If Mariners have questions about access, the onsite project safety vessels can provide direction via VHF Marine 16. Alternatively, mariners may reach out directly to the CVOW Marine Coordination Center (757-366-7000)

**\*\* Mariners are reminded not to touch or tie off to monopiles and to remain vigilant for other vessels, including operational Project vessels, in the area.\*\***

## Project Vessels as of November 1

NAME	LENGTH	CALL SIGN	VESSEL NUMBER	MMSI	TYPE AND PURPOSE
<b>Foundation Installation and Support Vessels</b>					
FLINTSTONE	507'	PBZD	9528433	245861000	Scour Protection (Rock) Installation Vessel
<b>Cable Installation and Seabed Preparation Vessels</b>					
LIVINGSTONE	528'	PBXN	9776925	244010952	Cable Installation Vessel
<b>Safety Vessels</b>					
CAPT DANNY	83'	WDL7090	N/A	368157020	Fishing Vessel – Project Safety Vessel
ALLIANCE	111'	WDF7948	N/A	366384000	
ATLANTIC BOUNTY	81'	WDB8620	N/A	366961860	Fishing Vessel – Project Safety Vessel
<b>Transportation Vessels</b>					
SUN RISE	554'	D7GU	9623219	440032000	Heavy Lift Transport Vessel
MEGA CARAVAN 2	507'	DSMZ7	9586758	441946000	Heavy Lift Transport Vessel
<b>Fisheries Resource Characterization Vessels</b>					
R/V BAY EAGLE	65'	WBR3978	N/A	366749460	Research Vessel
F/V THOMAS REED	49'	SURV1	N/A	367187470	Commercial Fishing Vessel
F/V LADY ISLA	47'		1090997	338495354	Commercial Fishing Vessel

*Mariners and the public are reminded that due to the nature of the construction activities, project vessels are often restricted in their ability to maneuver. It is requested that mariners communicate with project vessels on Channel 16 VHF to coordinate any necessary passing arrangements. Safety vessels will be on scene to assist with the coordination of commercial and public marine traffic and project vessels.*

### Installed Components:

	Name	Type	Coordinates	Installation date
1	<b>G2K04</b>	Monopile	36.869196°N 075.456227°W	22 May 2024
2	<b>G2J05</b>	Monopile	36.884680°N 075.442662°W	26 May 2024
3	<b>G2J04</b>	Monopile	36.884621°N 075.458216°W	28 May 2024
4	<b>G2J03</b>	Monopile	36.884560°N 075.473769°W	31 May 2024
5	<b>G2H05</b>	Monopile	36.900106°N 075.444659°W	4 June 2024
6	<b>G2H06</b>	Monopile	36.900163°N 075.429103°W	7 June 2024
7	<b>G2K03</b>	Monopile	36.869135°N 075.471777°W	8 June 2024
8	<b>G2J06</b>	Monopile	36.884737°N 075.427109°W	14 June 2024
9	<b>G2H04</b>	Monopile	36.900047°N 075.460216°W	16 June 2024
10	<b>G2H03</b>	Monopile	36.899985°N 075.475772°W	17 June 2024
11	<b>G2K05</b>	Monopile	36.869255°N 075.440677°W	18 June 2024



12	<b>G2G06</b>	Monopile	36.915589°N 075.431087°W	19 June 2024
13	<b>G2G05</b>	Monopile	36.915531°N 075.446646°W	20 June 2024
14	<b>G2F07</b>	Monopile	36.931061°N 075.417520°W	22 June 2024
15	<b>G2E07</b>	Monopile	36.946487°N 075.419502°W	23 June 2024
16	<b>G2F06</b>	Monopile	36.931005°N 075.433082°W	25 June 2024
17	<b>G2F03</b>	Monopile	36.930826°N 075.479770°W	26 June 2024
18	<b>G2G03</b>	Monopile	36.915410°N 075.477765°W	28 June 2024
19	<b>G2F04</b>	Monopile	36.930888°N 075.464208°W	29 June 2024
20	<b>G2F05</b>	Monopile	36.930947°N 075.448645°W	01 July 2024
21	<b>G2E06</b>	Monopile	36.946431°N 075.435068°W	02 July 2024
22	<b>G2E05</b>	Monopile	36.946373°N 075.450634°W	03 July 2024
23	<b>G2E03</b>	Monopile	36.946250°N 075.481765°W	04 July 2024
24	<b>G2D06</b>	Monopile	36.961856°N 075.437065°W	05 July 2024
25	<b>G2D04</b>	Monopile	36.961737°N 075.468203°W	06 July 2024
26	<b>G2C05</b>	Monopile	36.977382°N 075.455728°W	09 July 2024
27	<b>G2D05</b>	Monopile	36.961798°N 075.452634°W	10 July 2024
28	<b>G2D07</b>	Monopile	36.961912°N 075.421496°W	13 July 2024
29	<b>G2D08</b>	Monopile	36.961966°N 075.405927°W	14 July 2024
30	<b>G2B06</b>	Monopile	36.992697°N 075.441051°W	15 July 2024
32	<b>G2C06</b>	Monopile	36.977281°N 075.439052°W	17 July 2024
33	<b>G2E08</b>	Monopile	36.946541°N 075.403936°W	19 July 2024
34	<b>G2B07</b>	Monopile	36.992754°N 075.425476°W	20 July 2024
35	<b>G2D09</b>	Monopile	36.962019°N 075.390358°W	21 July 2024
36	<b>G2F08</b>	Monopile	36.931114°N 075.401957°W	22 July 2024
37	<b>G2G08</b>	Monopile	36.915697°N 075.399967°W	22 July 2024
38	<b>G2G04</b>	Monopile	36.915697°N 075.399967°W	25 July 2024
39	<b>G2D11</b>	Monopile	36.962117°N 075.359220°W	28 July 2024
40	<b>G2E11</b>	Monopile	36.946690°N 075.357238°W	29 July 2024
41	<b>G2D10</b>	Monopile	36.962069°N 075.374789°W	29 July 2024
42	<b>G2E09</b>	Monopile	36.946592°N 075.388370°W	31 July 2024
43	<b>G2H08</b>	Monopile	36.900271°N 075.397990°W	2 August 2024
44	<b>G2F11</b>	Monopile	36.931263°N 075.355268°W	3 August 2024

45	<b>G2F10</b>	Monopile	36.931216°N 075.370831°W	4 August 2024
46	<b>G2G10</b>	Monopile	36.915798°N 075.368848°W	5 August 2024
47	<b>G2F09</b>	Monopile	36.931166°N 075.386394°W	6 August 2024
48	<b>G2G09</b>	Monopile	36.915749°N 075.384408°W	7 August 2024
49	<b>G2J07</b>	Monopile	36.884792°N 075.411556°W	10 August 2024
50	<b>G2H09</b>	Monopile	36.900322°N 075.382433°W	11 August 2024
51	<b>G2J09</b>	Monopile	36.884896°N 075.380449°W	12 August 2024
52	<b>G2K09</b>	Monopile	36.869469°N 075.378476°W	12 August 2024
53	<b>G2K08</b>	Monopile	36.869419°N 075.394026°W	13 August 2024
54	<b>G2K07</b>	Monopile	36.869366°N 075.409577°W	14 August 2024
55	<b>G3H12</b>	Monopile	36.900463°N 075.335763°W	18 August 2024
56	<b>G2K10</b>	Monopile	36.869518°N 075.362926°W	21 August 2024
57	<b>G2H07</b>	Monopile	36.900218°N 075.413546°W	21 August 2024
58	<b>G2K06</b>	Monopile	36.869311°N 075.425127°W	22 August 2024
59	<b>G3H13</b>	Monopile	36.900506°N 075.320207°W	23 August 2024
60	<b>G3J13</b>	Monopile	36.885079°N 075.318235°W	23 August 2024
61	<b>G3G11</b>	Monopile	36.915845°N 075.353288°W	25 August 2024
62	<b>G3J12</b>	Monopile	36.885036°N 075.333788°W	26 August 2024
63	<b>G3H14</b>	Monopile	36.900547°N 075.304650°W	26 August 2024
64	<b>G3G14</b>	Monopile	36.915975°N 075.306609°W	27 August 2024
65	<b>G3G13</b>	Monopile	36.915934°N 075.322169°W	28 August 2024
66	<b>G3G12</b>	Monopile	36.915891°N 075.337728°W	29 August 2024
67	<b>G2E04</b>	Monopile	36.946312°N 075.466199°W	31 August 2024
68	<b>G2E10</b>	Monopile	36.946642°N 075.372804°W	01 Sept 2024
69	<b>G3F12</b>	Monopile	36.931309°N 075.339705°W	02 Sept 2024
70	<b>G3F13</b>	Monopile	36.931352°N 075.324142°W	08 Sept 2024
71	<b>G3C13</b>	Monopile	36.977634°N 075.330046°W	09 Sept 2024
72	<b>G3B12</b>	Monopile	36.993008°N 075.347599°W	11 Sept 2024
73	<b>G3C14</b>	Monopile	36.977677°N 075.314474°W	12 Sept 2024
74	<b>G3E13</b>	Monopile	36.946780°N 075.326106°W	12 Sept 2024
75	<b>G3D12</b>	Monopile	36.962163°N 075.343650°W	13 Sept 2024
76	<b>G3E14</b>	Monopile	36.946821°N 075.310540°W	19 Sept 2024



77	<b>G3D13</b>	Monopile	36.962207°N 075.328081°W	20 Sept 2024
78	<b>G3D14</b>	Monopile	36.993095°N 075.316448°W	23 Sept 2024
1	<b>T2G07</b>	Pin Piles (4)	36.915644°N 075.415527°W	16 October 2024

We remain committed to maintaining communications with fishing communities and other mariners in the area via these periodic updates, informational speaking engagements and dock visits. This information is also posted on the **CVOW website**.

For additional information or requests for speaking engagements, please contact the following individuals or submit a comment on the **CVOW website** for response.

- Additional project information is available on the [CVOW project website](#).
- Sign up to receive USCG Local Notice to Mariners Updates: [Subscribe to Our RSS Feeds | Navigation Center \(uscg.gov\)](#)
- GIS Shapefiles of the project site are available [here](#).

Ron Larsen  
Fisheries Liaison Officer  
Sea Risk Solutions  
[ronlarsen@searisksolutions.com](mailto:ronlarsen@searisksolutions.com)  
570.242.5023

Michael Lewis  
CVOW Marine Affairs Manager  
Dominion Energy  
[michael.b.lewis@dominionenergy.com](mailto:michael.b.lewis@dominionenergy.com)  
757.236.8222