

Monthly Mariner's Update for Coastal Virginia Offshore Wind	Date of Applicability	01 September 2024
	Issue:	09/24
	Revision:	00

***The goal of the Monthly Mariner's Update is to give a high-level overview of ongoing and planned near-term construction activities and the vessels involved. Questions regarding construction operations are welcome, preferably well in advance of each construction activity. These questions and comments can be directed [here](#).***

- ***Weekly updates are published in the USCG Local Notice to Mariners which can be found [here](#).***
- ***Previous issues of the Mariner's Update and additional resources can be found [here](#).***

Section VII within the USCG LNTM contains information about planned installation sequence and the coordinates of the planned foundations under the heading "VA – SEACOAST – CAPE MAY TO CAPE HATTERAS – COASTAL VIRGINIA OFFSHORE WIND ACTIVITIES – SAFETY ZONE". Additionally, Section VIII (Light List Corrections) will highlight the installed foundation locations and their temporary lighting characteristics once they are installed.

### **Project Background Information**

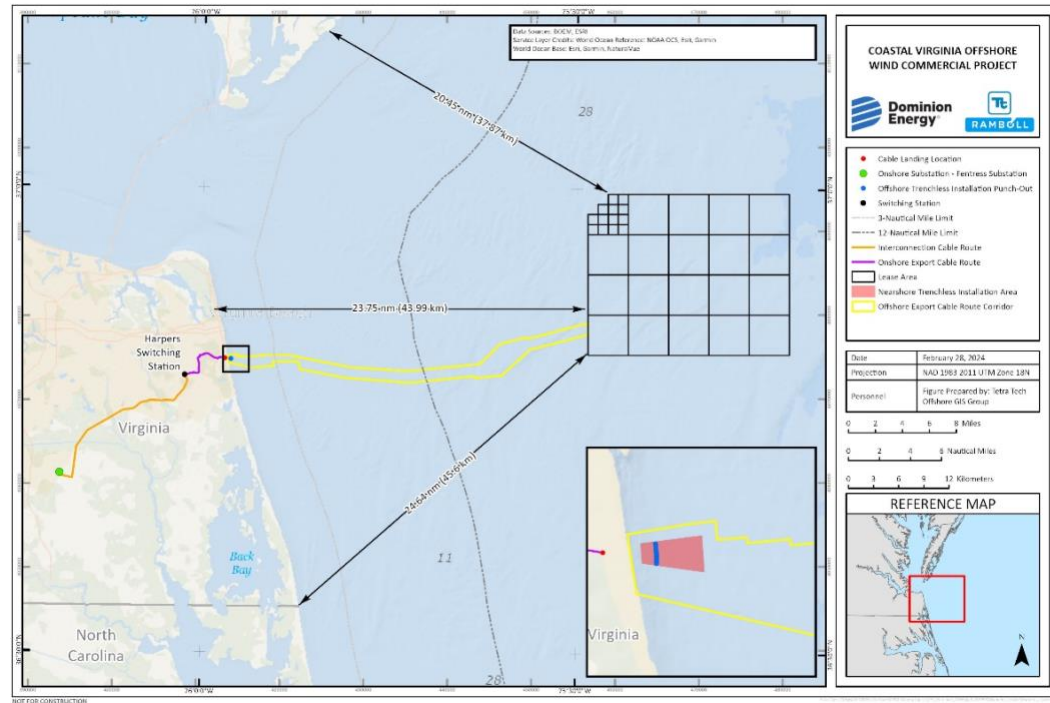
***Offshore construction work for Coastal Virginia Offshore Wind (CVOW) commenced in late February 2024 with the first seabed disturbing activity – the relocation of the first Munition of Explosive Concern (MEC).***

Dominion Energy will construct, own and operate the Coastal Virginia Offshore Wind (CVOW) Project (hereinafter referred to as the Project). The Project is located in the Commercial Lease of Submerged Lands for Renewable Energy Development on the Outer Continental Shelf Offshore Virginia (Lease No. OCS-A 0483), with buried subsea cables connecting CVOW to shore. The purpose of this Project is to provide 2.6 gigawatts of clean, reliable offshore wind energy to our customers, while providing substantial economic and environmental benefits to the Commonwealth of Virginia.

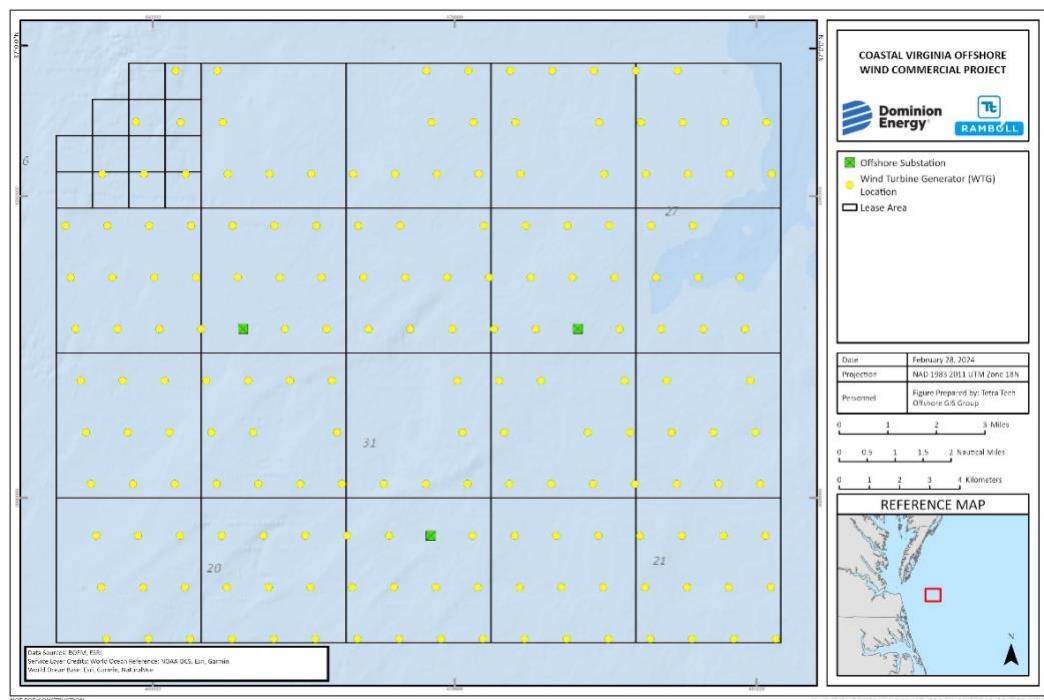
Offshore components of the Project will consist of the following:

- 176 Wind Turbine Generators (WTGs), each with a capacity of 14.7 megawatts, and associated monopile foundations;
- Three Offshore Substations (OSS);
- Approximately 231 miles (372 kilometers) of total length of Inter-Array Cables (IACs) in the CVOW Lease Area; average IAC length of 5,868 feet (1,789 meters) between WTGs and connected to OSSs; and
- Nine buried submarine high-voltage alternating-current Offshore Export Cables (OECs), approximately 350 miles (563 kilometers) of total length, connecting the OSSs to shore at the State Military Reservation (SMR) in Virginia Beach, VA.

The offshore project components, including the WTGs, OSSs, IACs and OECs, will be located in federal waters in the OCS-A 0483 Lease Area (Lease Area). Portions of the OECs will also be located in Commonwealth of Virginia waters (within three miles of shore).



Boundary of CVOW project



WTG and OSS Layout

CVOW GIS Shapefiles of the project area and export cable corridor are available [here](#) for download.

**Work planned for the period of September 1, 2024 to September 30, 2024**

- Pre-Lay Grapnel Runs ongoing in the Export Cable Corridor with the M/V GO SEEKER
- CLV LIVINGSTONE is on the project site and preparing for installation of the first set of deepwater export cables
- R/V NV5 will be surveying along the Export Cable Corridor and within the Offshore Lease Area in support of cable installation
- Monopile installation activities in the northeastern area of the CVOW site
- Multiple large project components are scheduled for arrival at Portsmouth Marine Terminal
- Ongoing fisheries resource studies in and around the Lease Area

**Special Note:**

**Please continue to avoid locations where project buoys may be deployed in the lease area. These buoys play a vital role in the CVOW compliance and environmental protection process and can be easily damaged by vessel strikes. Details on locations can be found in the latest USCG Local Notice to Mariners and at the bottom of the Offshore Installation Activities section.**

**CVOW Marine Coordination Center**

The CVOW project established a shoreside Marine Coordination Center (MCC) to monitor and coordinate all offshore activity related to project construction and operations. The MCC is manned 24 hours a day, 7 days a week and can provide further project details if required.

<b>Marine Coordination Center Contact Information</b>	757-366-7000 (desk)
	757-731-8307 (cell)
	Email: <a href="mailto:CVOWOps@dominionenergy.com">CVOWOps@dominionenergy.com</a>

**Offshore Installation Activities**



**M/V ORION will continue installation of monopiles in the lease area.** Supporting the monopile installation will be the M/V ATLANTIC OCEANTIC and HOS RUGER, providing double big bubble curtain (DBBC) support, M/V GO PATRIOT, the dedicated Protected Species Observation vessel, and M/V GO FREEDOM supporting the buoy installations near the installation sites.

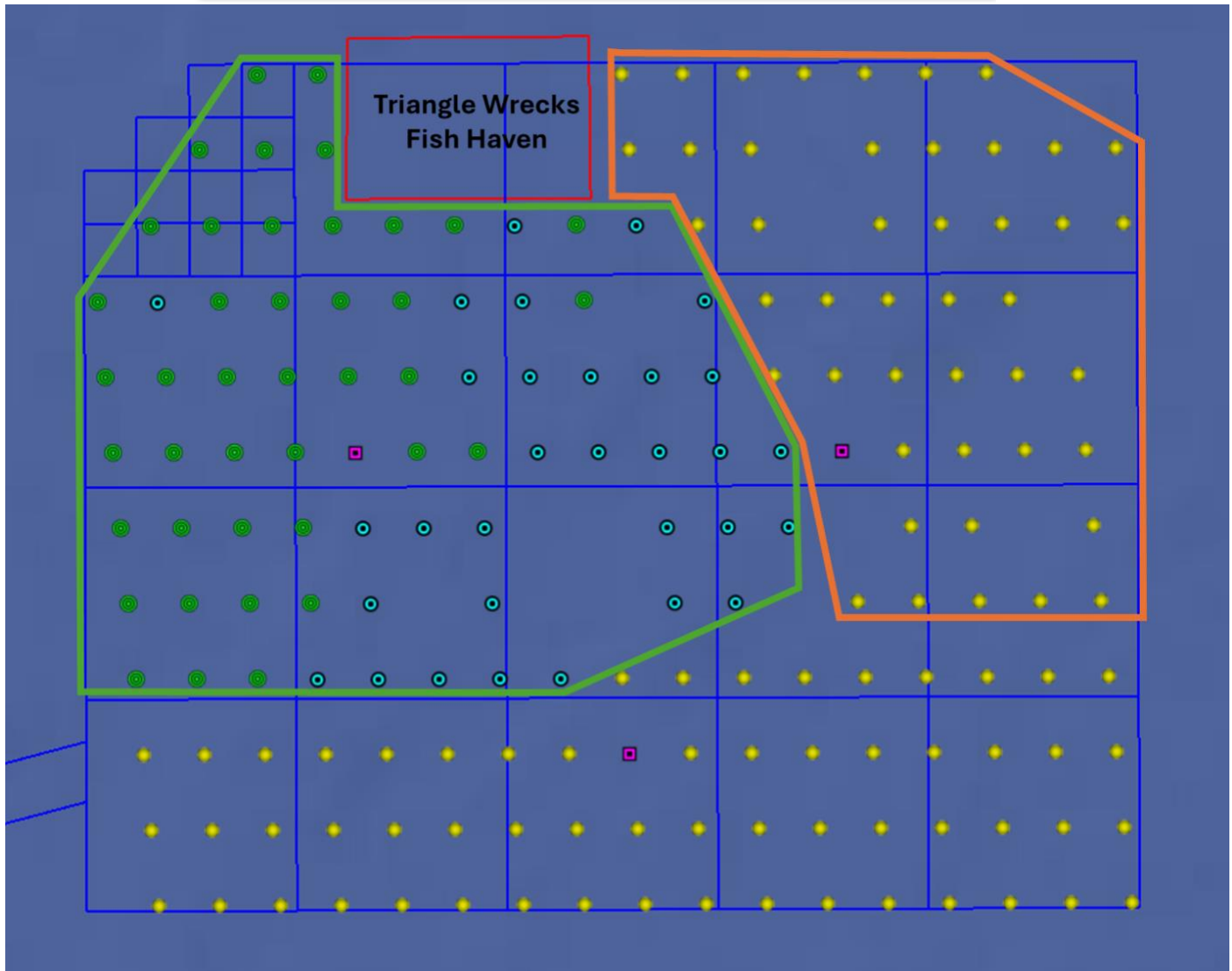
Weekly updates to the locations of installed monopiles are published in the USCG Local Notice to Mariners.

Below is a depiction of the monopile installation to date and forecasted installation area. The area marked in green indicates the area of completed monopile installations. The area outlined in orange indicates the

focus over the next several weeks. Specific installation locations are published weekly in the USCG Local Notice to Mariners.

**LEGEND**

 Planned Turbine Location	 Planned Substation Location
 Installed Foundation	 Installed Foundation w/Rock



### Marine Lighting on Monopile Foundations



Once monopiles are installed in the seabed, quick-flashing yellow marine navigation lights will be installed and operated from sunset to sunrise. Updates to the lighting installations will be published in the USCG Local Notice to Mariners and USCG Light List.

Monopile foundations extend 15 feet above the sea; extreme caution should be exercised when operating in the area. For up-to-date status of foundation installations, please reference the current USCG Local Notice to Mariners.

### Rock Placement Around Foundations

Scour rock installation activities had been paused for a period during August, the M/V FLINTSTONE will resume installation activities mid-September and continue scour rock installation at the bases of the remaining installed monopiles.

### USCG Safety Zone in Effect at Installation Sites

The U.S. Coast Guard has established 179 temporary 500-meter safety zones around the construction of 176 wind turbine generators and three offshore substations in Federal waters on the Outer Continental Shelf, east northeast of Virginia Beach, Virginia. This action is necessary to protect life, property and the environment during construction of the foundations and the subsequent installation of the turbine components, from May 1, 2024, to May 1, 2027. When enforced, only attending vessels and those vessels specifically authorized by the Fifth Coast Guard District Commander, or a designated representative, are permitted to enter or remain in the temporary safety zones. Each of the 179 temporary safety zones will be enforced individually, for a period lasting approximately 48 hours, as construction progresses from one structure to the next.

### Buoy Installations Supporting the Monopile Installation Activities

Acoustic measurement and meteorological buoys are deployed in the lease area. Reference previous CVOW Mariner Updates and USCG Local Notice to Mariners for more details on locations and timelines.

Buoy Name	Type	Latitude (DMS)	Longitude (DMS)	Estimated Dates of Deployment	
				From	To
WR1	Wave Monitoring Buoy	36° 56' 19.27" N	075° 26' 30.67" W	Apr-24	Nov-24
WR2	Wave Monitoring Buoy	36° 53' 05.43" N	075° 23' 45.61" W	Apr-24	Nov-24
B4-P1	Passive Acoustic Monitoring Buoy	36° 59' 35.06" N	075° 23' 43.15" W	May-24	Oct-24
B5-P1	Passive Acoustic Monitoring Buoy	36° 55' 02.72" N	075° 25' 30.01" W	May-24	Aug-24



<b>B6-P1</b>	Passive Acoustic Monitoring Buoy	36° 51' 52.58" N	075° 24' 14.42" W	May-24	Aug-24
<b>B1-P2</b>	Passive Acoustic Monitoring Buoy	36° 52' 08.79" N	075° 20' 10.85" W	Jun-24	Aug-24
<b>B2-P2</b>	Passive Acoustic Monitoring Buoy	36° 57' 23.11" N	075° 19' 50.83" W	Jun-24	Aug-24
<b>B3-P2</b>	Passive Acoustic Monitoring Buoy	36° 59' 52.30" N	075° 17' 05.82" W	Jun-24	Aug-24
<b>B4-P2</b>	Passive Acoustic Monitoring Buoy	36° 58' 15.95" N	075° 15' 17.65" W	Sep-24	Oct-24
<b>B5-P2</b>	Passive Acoustic Monitoring Buoy	36° 55' 15.55" N	075° 15' 57.15" W	Sep-24	Oct-24
<b>B6-P2</b>	Passive Acoustic Monitoring Buoy	36° 51' 36.19" N	075° 18' 43.08" W	Sep-24	Oct-24

### Seabed Preparation

UXO/MEC relocation efforts have been concluded. The potential for further MEC discovery remains elevated, and any additional targets identified will continue to be communicated via USCG Broadcast Notice to Mariners and publication in the USCG Local Notice to Mariners. M/V HOS BAYOU will continue to assist the M/V NORTHSTAR NAVIGATOR with marine debris relocation.

M/V GO SEEKER will be conducting pre-lay grapnel runs (PLGR) in the deepwater section of the export cable corridor. PLGR is one of the last seabed preparation activities conducted prior to cable installation, designed to remove any other obstructions that may have been deposited since clearance surveys, or perhaps were not known about previously. Items typically removed during PLGR operations are wires, ropes, abandoned fishing gear, pipes and tubes, and general debris.

CLV LIVINGSTONE and R/V NV5 are conducting seabed survey activities along the deepwater sections of the export cable corridor ahead of planned cable installation. Cable installation activities will commence for 2 sections of cable in the deepwater section in September.

### Port Operations

During the month of September, large components such as monopiles and transition pieces will continue to arrive and be staged at Portsmouth Marine Terminal.

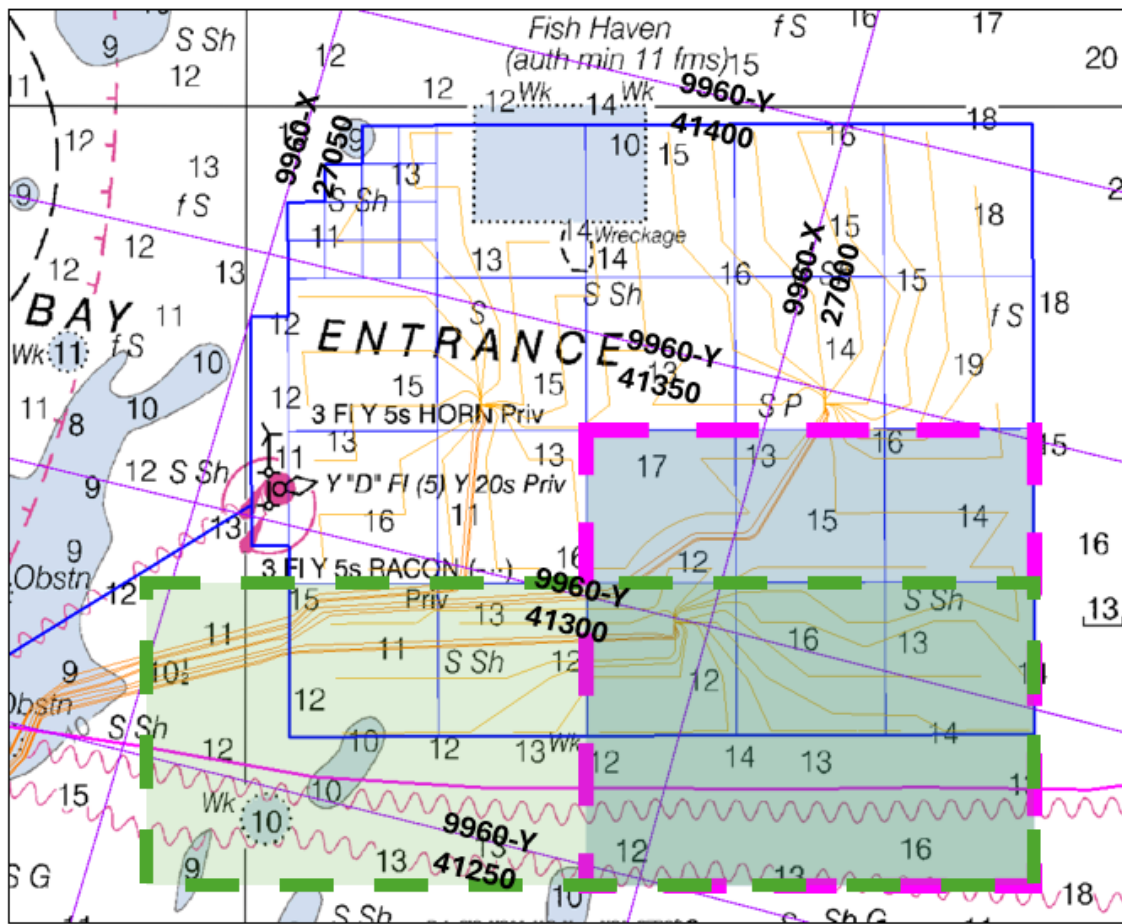
<b>Total Components Delivered to Portsmouth Marine Terminal</b>	
<b>Monopile Foundations</b>	84
<b>Transition Pieces</b>	24
<b>Offshore Substation Pin Piles</b>	12
<b>Pin Pile Templates</b>	1



## Fisheries Resource Characterization Studies

Dominion Energy is working with the Virginia Institute of Marine Science (VIMS), the Virginia Marine Resource Commission (VMRC) and commercial fishermen to study Black Sea Bass and Channeled Whelk in and near the project area, especially the areas shown in the chartlets below. The use of new acoustic release device technology avoids the need for vertical lines and marker buoys in the water.

- **Black Sea Bass:** The study consists of eight strings of ventless traps with 6 traps per string. Sampling once per month, with a 48-hour soak and acoustic release buoys are utilized to recover the gear. The chart below displays the study area, which includes locations south of the Lease Area. The study is currently taking place utilizing the VIMS R/V Bay Eagle and will continue throughout 2024. The study area is outlined in pink below.
- **Channeled Whelk:** The study uses 18 strings of seven pots, a 48-hour soak time and recovery by acoustic release buoys. This cooperative study will be completed in partnership with local commercial whelk fishermen, and activities will continue throughout 2024. The study area includes the southern portion of the CVOW lease site (with future turbine locations) and a control area outside the Lease Area. The entire study area is outlined in green below.
- **Atlantic Surfclam:** The final report for the Atlantic Surfclam surveys that were conducted in June of 2023 has been published and is available on the CVOW Project Website [here](#). This survey was a collaborative effort between VIMS, Rutgers University, VMRC and Dominion Energy.



### Recreational Fisheries

- Access to the lease area for recreational activities is unrestricted unless construction activities are active.
- If construction activities are active, a **500-meter standoff distance is requested**.
- If Mariners have questions about access, the F/V ATLANTIC BOUNTY or F/V CAPT DANNY are the on-site project safety vessels and can provide direction via VHF Marine 16. Alternatively, mariners may reach out directly to the CVOW Marine Coordination Center (757-366-7000)

**\*\* Mariners are reminded not to touch or tie off to monopiles and to remain vigilant for other vessels, including operational Project vessels, in the area.\*\***



## Project Vessels

NAME	LENGTH	CALL SIGN	VESSEL NUMBER	MMSI	TYPE AND PURPOSE
<b>Installation Vessels</b>					
ORION	705'	ORMB	9825453	205755000	Offshore Heavy Lift DP3 Installation Vessel: Monopile & Pin Pile Installation
GO GLORY	145'	WDN3240	8998112	368269780	Offshore Supply Vessel
GO FREEDOM	150'	WDK6647	8998100	368076640	Offshore Supply Vessel – Passive Acoustic Monitoring Support Vessel
GO PATRIOT	150'	WDJ4988	8987852	367783120	Offshore Supply Vessel – Buoy Support Vessel
ATLANTIC OCEANIC	150'	WAOZ	9285275	366907000	Offshore Supply Vessel – Bubble Curtain Installation Vessel
HOS RUGER	280'	WDN2728	9385269	368264720	Offshore Supply Vessel – Bubble Curtain Installation Vessel
NV5	72'	WDN5299	NA	368288820	Survey Vessel – Cable route & Lease Area
ATLANTIC BOUNTY	81'	WDB8620	N/A	366961860	Fishing Vessel – Project Safety Vessel
CAPT DANNY	83'	WDL7090	N/A	368157020	Fishing Vessel – Project Safety Vessel
<b>Seabed Preparation Vessels</b>					
HOS MYSTIQUE	250'	WDE3118	9472323	367334320	Offshore Supply Vessel: Debris Relocation
NORTHSTAR NAVIGATOR	265'	WDG3786	9407809	366766000	Offshore Supply Vessel: Debris Relocation
LIVING STONE	528'	PBXN	9776925	244010952	Cable Laying Vessel – Cable trenching and installation
GO SEEKER	144	WDN3304	9579157	368270390	Offshore Supply Vessel: Pre-Lay Grapnel Run
<b>Transportation Vessels</b>					
SUN SHINE	571'	D7DB	9471616	440040000	Heavy Lift Transport Vessel
SUN RISE	554'	D7GU	9623219	440032000	Heavy Lift Transport Vessel
MEGA CARAVAN 2	507'	DSMZ7	9586758	441946000	Heavy Lift Transport Vessel
<b>Fisheries Resource Characterization Vessels</b>					
R/V BAY EAGLE	65'	WBR3978		366749460	Research Vessel
F/V THOMAS REED	49'			367187470	Commercial Fishing Vessel
F/V LADY ISLA	47'		1090997	338495354	Commercial Fishing Vessel

*Mariners and the public are reminded that due to the nature of the construction activities, project vessels are often restricted in their ability to maneuver. It is requested that mariners communicate with project vessels on Channel 16 VHF to coordinate any necessary passing arrangements. Safety vessels will be on scene to assist with the coordination of commercial and public marine traffic and project vessels.*

**We remain committed to maintaining communications with fishing communities and other mariners in the area via these periodic updates, informational speaking engagements and dock visits. This information is also posted on the CVOW website.**

**For additional information or requests for speaking engagements, please contact the following individuals or submit a comment on the CVOW website for response.**



- Additional project information is available on the [CVOW project website](#).
- Sign up to receive USCG Local Notice to Mariners Updates: [Subscribe to Our RSS Feeds | Navigation Center \(uscg.gov\)](#)
- GIS Shapefiles of the project site are available [here](#).

Ron Larsen  
Fisheries Liaison Officer  
Sea Risk Solutions  
[ronlarsen@searisksolutions.com](mailto:ronlarsen@searisksolutions.com)  
570.242.5023

Michael Lewis  
CVOW Marine Affairs Manager  
Dominion Energy  
[michael.b.lewis@dominionenergy.com](mailto:michael.b.lewis@dominionenergy.com)  
757.236.8222