

Monthly Mariner's Update for Coastal Virginia Offshore Wind	Date of Applicability	01 March 2024
	Issue:	03/24
	Revision:	00

***The key aim of the Monthly Mariner's Update is to give a high-level overview of ongoing, and planned near-term, construction activities and the vessels involved. Questions regarding construction operations will be welcomed, preferably well in advance of each construction activity. These questions and comments can be directed [here](#).***

#### **Project Background Information:**

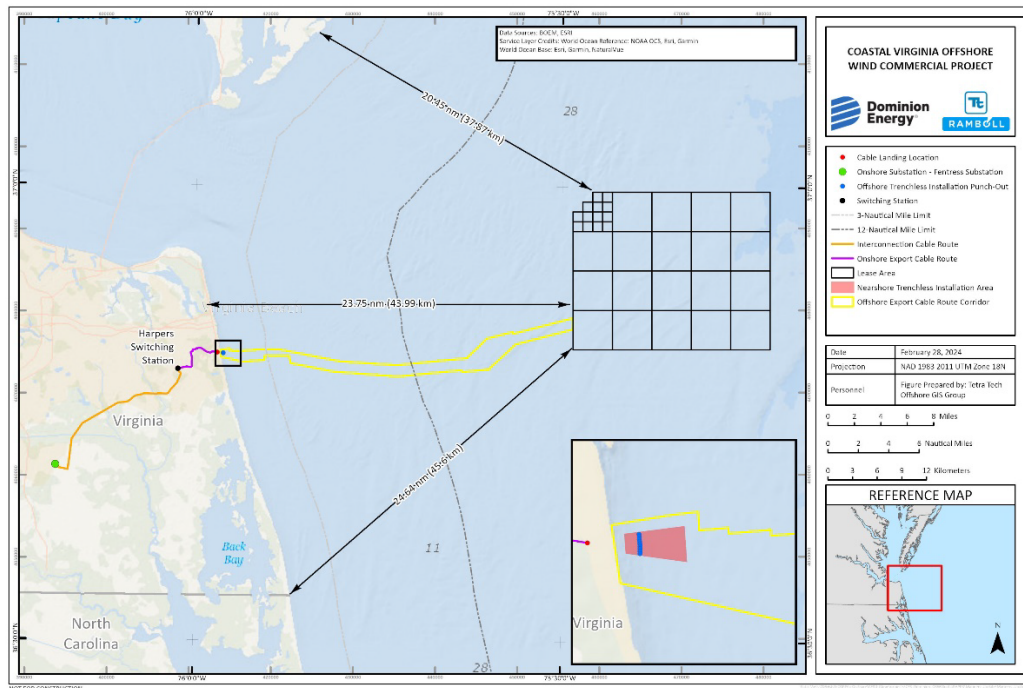
***Construction work for Coastal Virginia Offshore Wind (CVOW) commenced with the first seabed disturbing activity, the relocation of the first Munition of Explosive Concern, in late February 2024.***

Dominion Energy will construct, own and operate Coastal Virginia Offshore Wind (CVOW) (hereinafter referred to as the Project). The Project will be located in the Commercial Lease of Submerged Lands for Renewable Energy Development on the Outer Continental Shelf Offshore Virginia (Lease No. OCS-A 0483), with buried subsea cables connecting CVOW to shore. The purpose of this Project is to provide 2.6-gigawatts of clean, reliable offshore wind energy to our customers; while providing substantial economic and environmental benefits to the Commonwealth of Virginia.

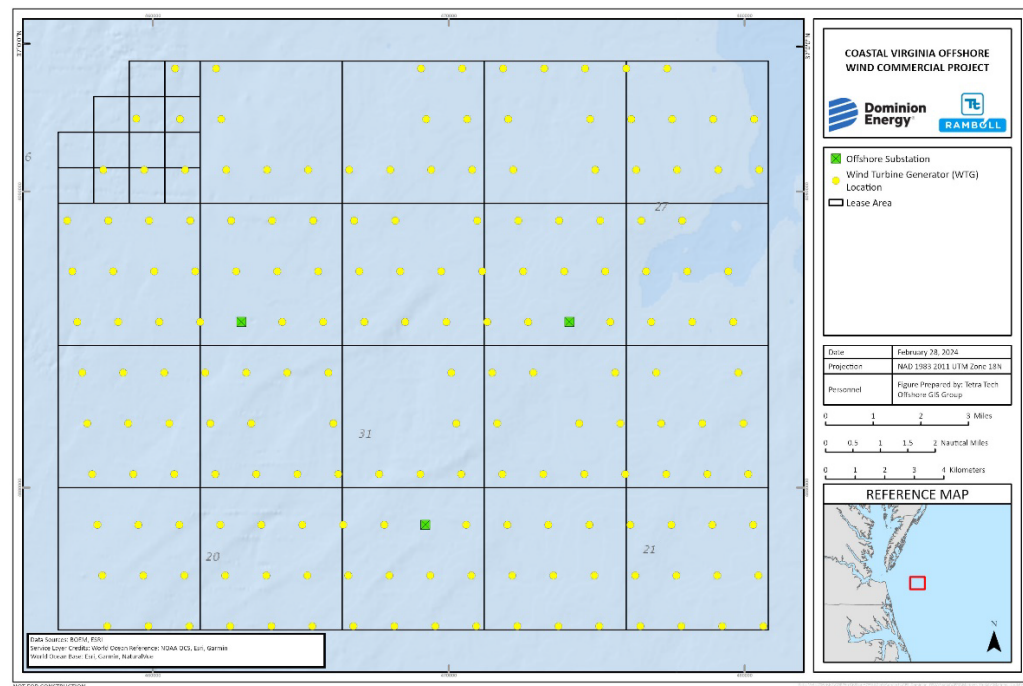
Offshore components of the Project will consist of the following:

- 176 Wind Turbine Generators (WTGs) and associated monopile foundations, each with a capacity of 14.7 megawatts;
- Three Offshore Substations (OSS) and associated Offshore Substation jacket foundations;
- Approximately 231 miles (372 kilometers) of total length of Inter-Array Cables within the CVOW Lease Area; average Inter-Array Cable length of 5,868 feet (1,789 meters) between WTGs and connected to the OSSs; and
- Nine (9) buried submarine high-voltage alternating-current Offshore Export Cables, approximately 350 miles (563 kilometers) of total length, connecting the OSSs to shore at the State Military Reservation (SMR) in Virginia Beach, VA.

The Offshore Project Components, including the WTGs, OSSs, Inter-Array Cables, and Offshore Export Cables will be located in federal waters in the OCS-A 0483 Lease Area (Lease Area). Portions of the Offshore Export Cables will also be located in Commonwealth of Virginia waters (within 3-miles of shore).



Boundary of CVOW project



WTG and OSS Layout



**Work planned for the period of March 1, 2024 to March 31, 2024:**

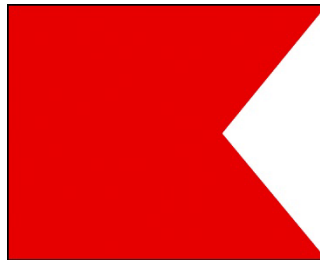
**Current and Planned Operations:**

**What should the public expect in the month of March?**

- **Munitions and Explosives of Concern (MEC) Identification and Relocation**
- **Nearshore Construction beginning approximately 400 yards off the coast of the State Military Reservation (SMR)**
- **Three towing evolutions from Fairwinds Landing to the SMR (details on the tow below)**
- **On-going fisheries resource studies in and around the lease area**
- **No project components are scheduled for arrival at Portsmouth Marine Terminal**

**Munitions and Explosives of Concern (MEC) Identification and Disposition:**

MEC *identification* activity is nearly complete, and the Project is shifting to MEC *relocation* activities. MEC, formally referred to as Unexploded Ordnance (UXO), must be relocated to provide a safe working area within the export cable corridor to install the export cables and for the safe installation of monopile foundations and Inter-Array Cables in the lease area. The final positions of MEC will be advertised to the public upon completion. Project vessels HOS INNOVATOR, HOS WARLAND, and HOS MYSTIQUE will be starting MEC relocation activities in and around the export cable corridor offshore, followed by relocation in the NW section of the lease area, and then closer to shore east of the Dam Neck Ocean Disposal Site (DNODS). Vessels engaged in MEC operations will fly the international maritime signaling flag bravo.



The U.S. Coast Guard (USCG) published [Docket Number USCG-2024-0081 to the Federal Register](#) to establish a temporary safety zone for navigable waters within a **1,000-yard radius** of the HOS INNOVATOR, HOS WARLAND, and/or the HOS MYSTIQUE. Operations are planned to relocate MEC in the Atlantic Ocean, within 12 miles of the shores of the State Military Reservation, in Virginia Beach, Virginia. The safety zone is needed to protect personnel, vessels, and other mariners and the marine environment from potential hazards created by these operations. Entry of vessels or persons into this zone is prohibited unless specifically authorized by the Captain of the Port, Sector Virginia or a designated representative.

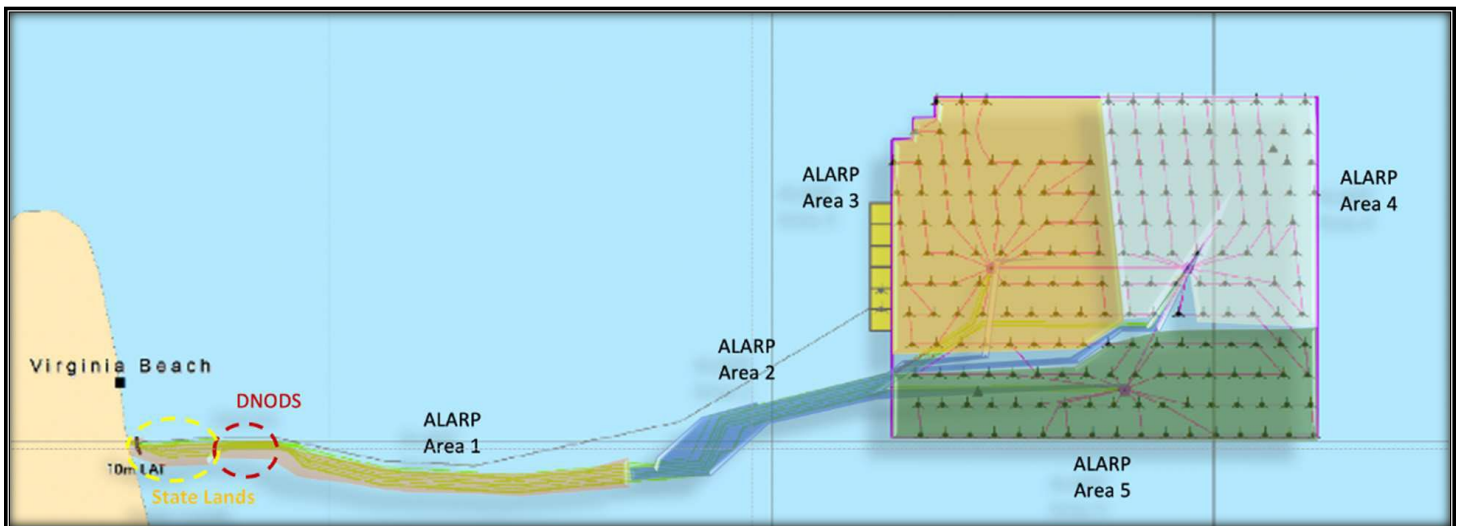
This rule is effective and subject to enforcement from January 26, 2024 through July 1, 2024. The USCG will issue a Broadcast Notice to Mariners via VHF–FM marine channel 16 when the zone is being enforced. For



vessels requesting to enter the Safety Zone, coordinate with Project vessels on VHF Ch 16 prior to entry or with USCG.

Operations will also be conducted outside the 12nm boundary, both within the export cable corridor and the Lease Area. There will not be an established USCG safety zone surrounding these MEC operations; however, vessels are requested to maintain a 1,000-yard exclusionary zone surrounding project vessels flying the bravo signaling flag conducting relocation activities.

Disposition activities started in Area 2 in late February along the Offshore Export Cable (OEC) Corridor and will then move to the WTG sites in Area 3 (See the below Chartlet).



## Vessels involved in MEC activities:



HOS Warland:  
302' LOA; 76' Beam  
Call Sign: WDH6999  
MMSI: 367643740  
Flag: USA  
IMO: 9742704



HOS Innovator:  
238' LOA; 54' Beam  
Call Sign: WDA4032  
MMSI: 338324000  
Flag: USA  
IMO: 9251808



HOS Mystique:  
250' LOA; 54' Beam  
Call Sign: WDE3118  
MMSI: 367334320  
Flag: USA  
IMO: 9472323



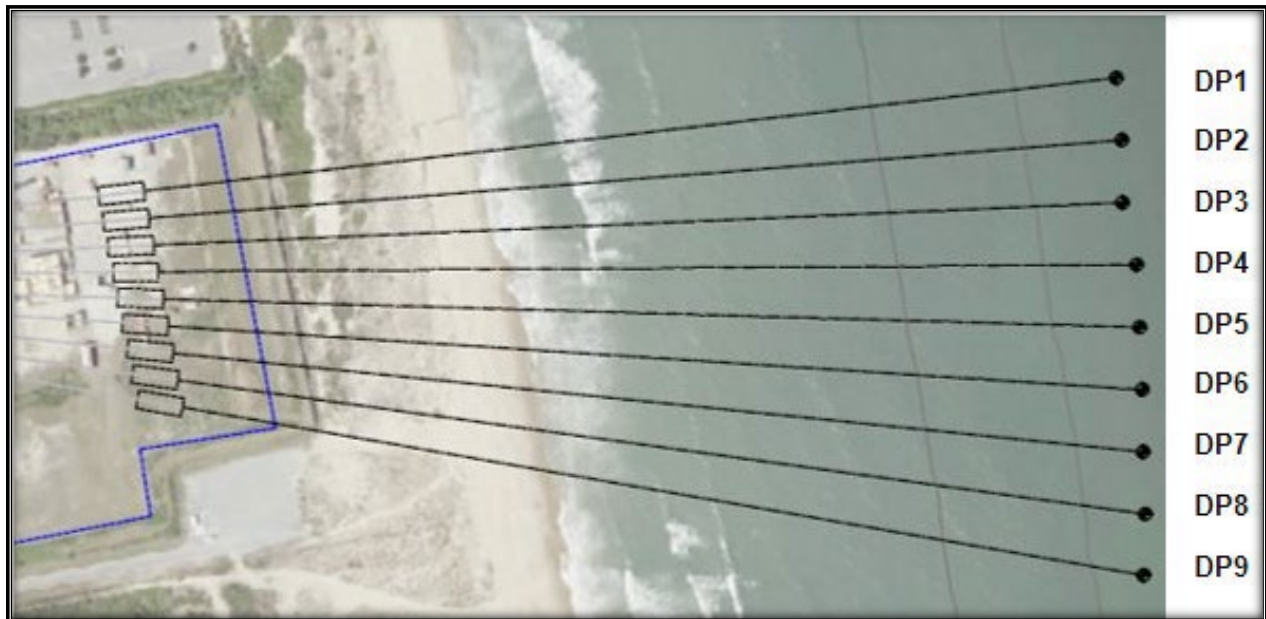
RHIB Zodiac Pro 7':  
MEC Disposition



### Direct Pipe Punchout Construction

Project contractors began construction activities onshore at, and offshore of, State Military Reservation (SMR) in Virginia Beach, VA in late February. These construction activities support the export cable landing sites within SMR property, which will run via underground conduit from a transition bay more than 325 feet (~100m) shoreside of the beach to predetermined positions approximately 1,310 feet (~400m) offshore. This first phase of the activity may continue through the balance of 2024.

The U.S. Coast Guard (USCG) published [Docket Number 2024-03590 to the Federal Register](#) to establish a safety zone from March 1, 2024, until December 31, 2024, during which Dominion Energy will be tunneling to lay electric transmission lines below the Atlantic Ocean. The safety zone will cover all navigable waters within 550 yards of the position 36°48'57.6" N 75°57'43.2" W (DP5 in image below), a distance selected to encompass all vessels and machinery being used by personnel to conduct tunneling operations. Consistent with its purpose of protecting personnel, vessels, and the marine environment in these navigable waters while the tunneling operations are conducted, the zone will only be subject to enforcement when such vessels are present. During subsurface construction operations, no vessel or person will be permitted to enter the safety zone without obtaining permission from the COTP or a designated representative.

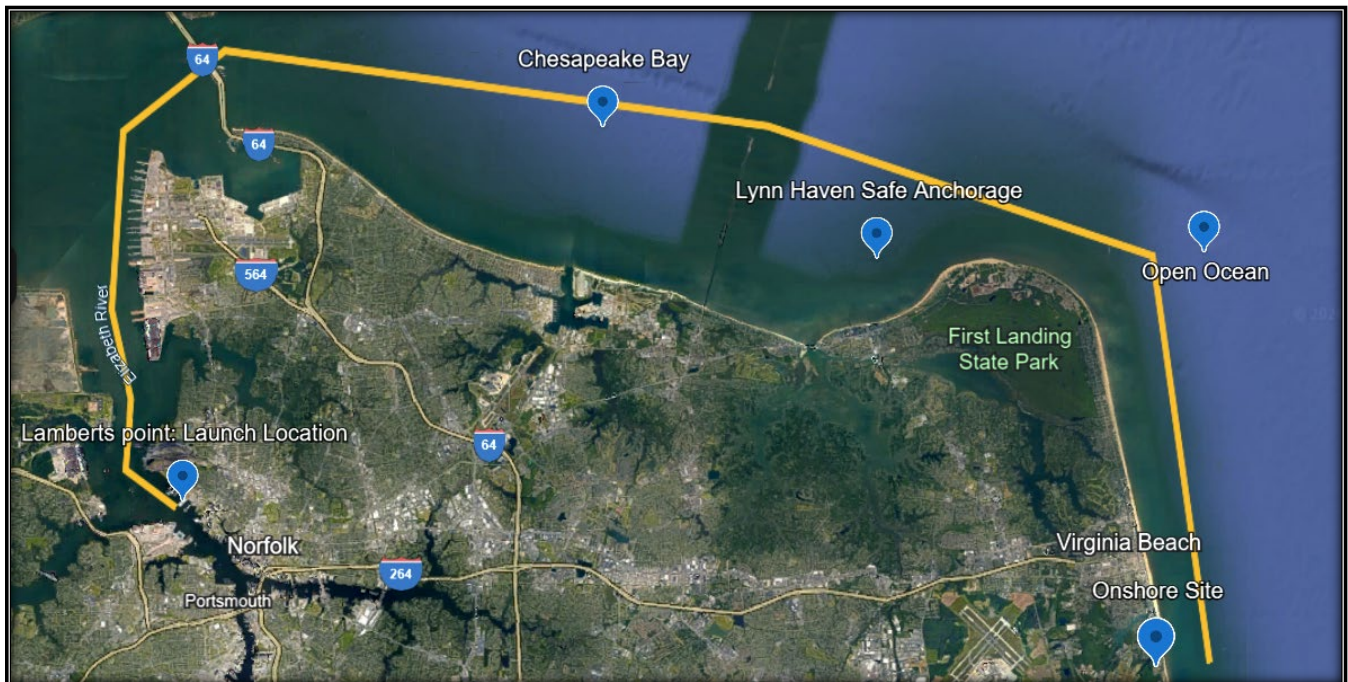




The 36" HDPE conduit will be fabricated onshore and launched offshore from Fairwinds Landing (Lambert's Point) in Norfolk, Virginia. The conduit will be towed approximately 30 NM to the offshore worksite. The tow fleet will consist of one leading tug, one tailing tug, and assistance/guard vessel(s) as required.

The HDPE Conduits in tow will be equipped with solid white lights to facilitate visibility of the conduits during transit.

- Launch and Tow operation to be held for three approximately 1800' HDPE Conduits in phase 1 of operations
  - 1<sup>st</sup> Launch: ~3/6
  - 2<sup>nd</sup> Launch: ~3/7
  - 3<sup>rd</sup> Launch: ~3/12



The three towing evolutions will utilize the auxiliary channel of the Thimble Shoals Channel, to avoid any impact to deep draft vessel traffic. Mariners are advised to exercise extreme caution when operating in the vicinity of the tow, as the vessels involved may have limited maneuverability. USCG Broadcast Notice to Mariners will be transmitted prior to towing operations.

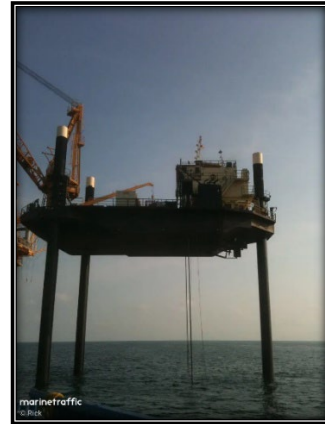


Current Planned Marine Vessel Spread for Nearshore Construction:				
RAM XII	Lift Boat	Dive Support	Aries Marine	Norfolk, VA
RAM XV	Lift Boat	Dive Support	Aries Marine	Dorchester, NJ
GO Glory	OSV	Supplies Transport	Guice Offshore	Fourchon, LA
Josephine K. Miller	OSV	Excavation	Miller's Launch	Staten Island, NY
Angeline	Tug	HDPE Tow	Seaward Marine	Norfolk, VA
Robert T	Tug	HDPE Tow	Seaward Marine	Norfolk, VA
Katan	Tug	HDPE Tow	Seaward Marine	Norfolk, VA
Alternative Vessels				
Ezea Sol	Tug	HDPE Tow	Seaward Marine	Norfolk, VA
Matti T	Tug	HDPE Tow	Seaward Marine	Norfolk, VA
Mia	Tug	HDPE Tow	Seaward Marine	Norfolk, VA
Oquaka Boats	Utility/small vessel	HDPE Tow	Seaward Marine	Norfolk, VA





Vessel Name	RAM XII
Call Sign	WDA6919
IMO Number	8764975
MMSI	366837540
Vessel Type	Lift Boat - Primary Dive Support Vessel



Vessel Name	RAM XV
Call Sign	WDB2653
IMO Number	8767305
MMSI	366878290
Vessel Type	Lift Boat - Secondary Dive Support Vessel



Vessel Name	Josephine K. Miller
Call Sign	WDF9573
IMO Number	9568835
MMSI	367506560
Vessel Type	Towing Vessel



Vessel Name	OSV GO GLORY
Call Sign	WDN3240
IMO Number	8998112
MMSI	368269780
Vessel Type	Offshore Supply Vessel



Vessel Name	Angeline Autumn
Call Sign	WDD7158
IMO Number	8227513
MMSI	368023560
Vessel Type	Towing Vessel



Vessel Name	Robert T
Call Sign	WDI8475
Official Number	589598
MMSI	367540560
Vessel Type	Towing Vessel

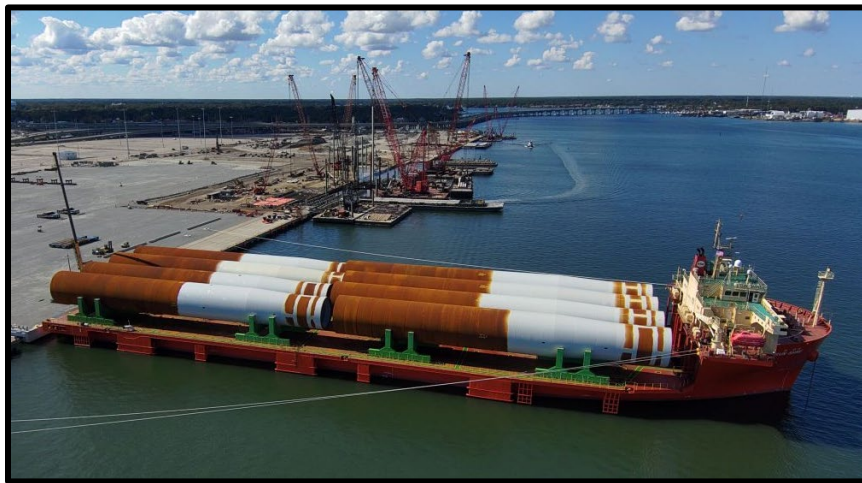


Vessel Name	Katan
Call Sign	WDM7615
Official Number	649338
MMSI	368235730
Vessel Type	Towing Vessel

### Component arrival at Portsmouth Marine Terminal

During the month of March 2024, there are no scheduled arrivals of components to Portsmouth Marine Terminal PMT).

- Eight (8) monopiles were delivered by the M/V Sun Shine in late February, and 12 additional monopiles are scheduled for delivery in April with the addition of the M/V Sun Rise to the project.
- There are currently 24 monopiles staged at PMT.
- Twelve (12) Offshore Substation Pin Piles are scheduled to be delivered during the month of April by the M/V Charlie.
- M/V Orion is scheduled to deliver grout silos and prepare for monopile loading in late April



(Photo Credit: Dominion Energy)

<b>Name</b>	<b>SUN SHINE</b>
<b>Flag</b>	Korea
<b>IMO</b>	9471616
<b>MMSI</b>	440040000
<b>Call sign</b>	D7DB
<b>AIS transponder class</b>	Class A



(Photo credit:marinetraffic.com)

<b>Name</b>	<b>SUN RISE</b>
<b>Flag</b>	Korea
<b>IMO</b>	9623219
<b>MMSI</b>	440032000
<b>Call sign</b>	D7GU
<b>General vessel type</b>	Heavy Lift Vessel



(Photo credit: marinetraffic.com)

<b>Name</b>	<b>CHARLIE</b>
<b>Flag</b>	Antigua Barbuda
<b>IMO</b>	9736236
<b>MMSI</b>	305543000
<b>Call sign</b>	V2HK6
<b>General vessel type</b>	Heavy Lift Vessel





(Photo credit: DEME Offshore US)

<b>Vessel Name</b>	<b>ORION</b>
<b>Flag</b>	Belgium
<b>IMO Number</b>	9825453
<b>MMSI</b>	205755000
<b>Call Sign</b>	ORMB
<b>General Vessel Type</b>	Offshore Heavy Lift DP3 / Installation Vessel

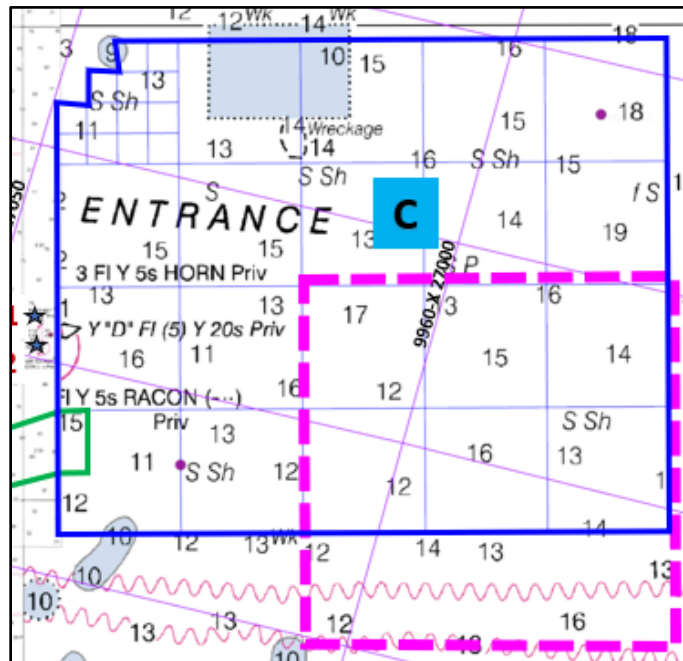




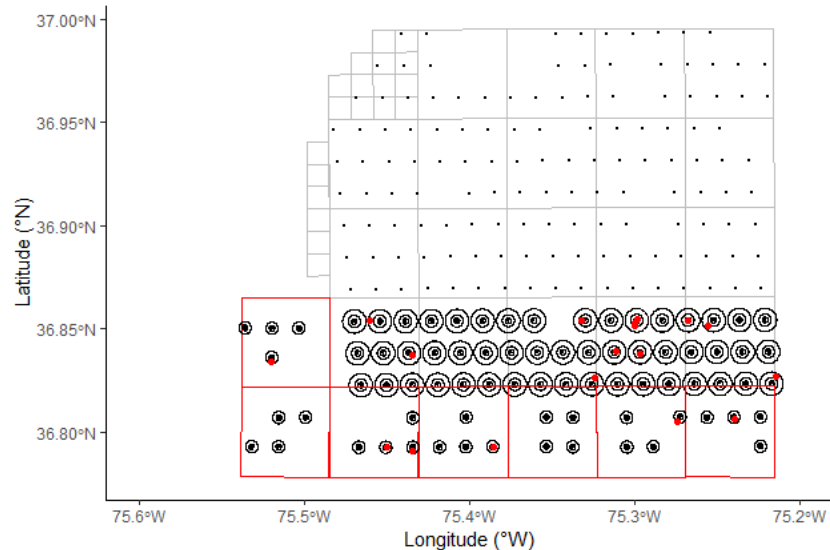
## Fisheries Resource Characterization Studies

In partnership with the Virginia Institute of Marine Science (VIMS), the Virginia Marine Resource Commission (VMRC), and commercial fishermen, Dominion Energy is conducting resource assessment studies for Black Sea Bass, Channeled Whelk, and Atlantic Surfclam in and around the project area, **specifically the areas outlined in the chartlets below**. The use of novel acoustic release device technology eliminates the need for vertical lines and marker buoys in the water.

- **Black Sea Bass:** The study consists of 8-strings of ventless traps with 6-traps per string. Sampling once per month, with a 48-hour soak, and acoustic release buoys are utilized to recover the gear. The chart below displays the sampling area, which includes locations south of the lease area. The study is currently taking place utilizing the VIMS R/V Bay Eagle and will continue through 2024.



- Channeled Whelk:** The study uses 18-strings of 7 pots, a 48-hour soak time, and recovery by acoustic release buoys. This cooperative study will be completed in partnership with local commercial whelk fishermen and activities will continue through 2024. The CVOW lease site (with future turbine locations and sampling distance bands (inner, middle, far) and with one control area (red outline; outside the lease area). The March 2024 sampling locations (red dots) are shown.



Name	BAY EAGLE (Black Sea Bass)
Length	65'
Call Sign	WBR3978
MMSI	366749460
Vessel Type	Research Vessel



Name	THOMAS REED (Channeled Whelk)
Length	49'
Call Sign	
MMSI	367187470
Vessel Type	Fishing Vessel



Name	LADY ISLA (Channeled Whelk)
Length	47'
Call Sign	
MMSI	338495354
Vessel Type	Fishing Vessel

Mariners are encouraged to contact Dominion Energy's Fisheries Liaisons with any specific questions about CVOW project activities in relation to fisheries. Additional project information is available on the [CVOW project website](#). Sign up to receive USCG Local Notice to Mariners Updates: [Subscribe to Our RSS Feeds | Navigation Center \(uscg.gov\)](#)



**Dominion  
Energy®**

## Coastal Virginia **Offshore Wind**

*Mariners and the public are reminded that due to the nature of the construction activities, project vessels may be restricted in their ability to maneuver. It is requested that mariners communicate with project vessels on Channel 16 VHF to coordinate any necessary passing arrangement. Safety vessels will be on scene to assist with the coordination of commercial and public marine traffic and project vessels.*

**We remain committed to maintaining communications with fishing communities and other mariners in the area via these periodic updates, informational speaking engagements and dock visits. This information is also posted on the CVOW Website.**

**For further information, please contact the following individuals or submit a comment on the CVOW website for response.**

Ron Larsen  
Fisheries Liaison Officer  
Sea Risk Solutions  
[ronlarsen@searisksolutions.com](mailto:ronlarsen@searisksolutions.com)  
570.242.5023

Michael Lewis  
CVOW Marine Affairs Manager  
Dominion Energy  
[Michael.b.lewis@dominionenergy.com](mailto:Michael.b.lewis@dominionenergy.com)  
757.236.8222