

Monthly Mariner's Update Coastal Virginia Offshore Wind (CVOW)	Date of Applicability:	01 February 2026
	Issue:	02/26
	Revision:	00

The goal of the Monthly Mariner's Update is to give a high-level overview of ongoing and planned near-term construction activities, and the vessels involved. Questions regarding construction operations are welcome, preferably well in advance of each construction activity. These questions and comments can be directed [here](#).

- The USCG has created a GIS-based Local Notice to Mariners product that is useful in visualizing project activities (Select Marine Construction Layer)- [Maritime Safety Information Products | Navigation Center](#)
- USCG Notice: Introducing the New [NAVCEN Maritime Safety Information Application](#)
- Previous issues of the CVOW Mariner's Update and additional resources can be found [here](#).

Dominion Energy's Coastal Virginia Offshore Wind – Commercial Project complied with the Director's Order issued by the Bureau of Ocean Energy Management on Monday, December 22, 2025. On January 16, 2026, a preliminary injunction was issued allowing the CVOW project to resume construction while Dominion Energy's lawsuit challenging the agency's action proceeds.



Image courtesy of Matthew Brooks
First Wind Turbine Generator Installed

Project Background Information

Offshore construction work for CVOW commenced in February 2024 with relocation of Munitions of Explosive Concern (MECs). Monopile (MP) foundation installation began in May 2024, subsea cable installation activities began in August 2024, and Transition Piece (TP) installation commenced in late December 2024. MP installation completed October 2025, and the 1st Wind Turbine Generator (WTG) was erected in January 2026.

Virginia Electric and Power Company d/b/a Dominion Energy Virginia (Dominion Energy) is constructing and will operate the Coastal Virginia Offshore Wind Project (Project or CVOW). The Project is located in the Commercial Lease of Submerged Lands for Renewable Energy Development on the Outer Continental Shelf Offshore Virginia - Lease No. OCS-A 0483 (Lease Area), with buried subsea cables connecting CVOW to shore (**Figure 1**). The purpose of this Project is to provide 2.6 gigawatts of clean, reliable offshore wind energy to our customers while providing substantial economic and environmental benefits to the Commonwealth of Virginia.

Offshore components of the Project will consist of the following:

- One hundred seventy-six (176) Wind Turbine Generators (WTGs), each with a capacity of 14.7 megawatts, and associated MP foundations;
- Three (3) Offshore Substations (OSS);
- Approximately 231 miles (372 kilometers) of total length of Inter-Array Cables (IACs) in the CVOW Lease Area; average IAC length of 5,868 feet (1,789 meters) between WTGs and connected to OSSs; and
- Nine (9) buried submarine high-voltage alternating-current Offshore Export Cables (OECs), approximately 350 miles (563 kilometers) of total length, connecting the OSSs to shore at the State Military Reservation in Virginia Beach, Virginia.

The offshore project components, including the WTGs, OSSs, IACs and OECs, will be located in federal waters in the Lease Area (**Figure 2**). Portions of the OECs will also be located in Commonwealth of Virginia waters (within three miles of shore).

CVOW GIS Shapefiles of the project area and export cable corridor are available [here](#) for download.

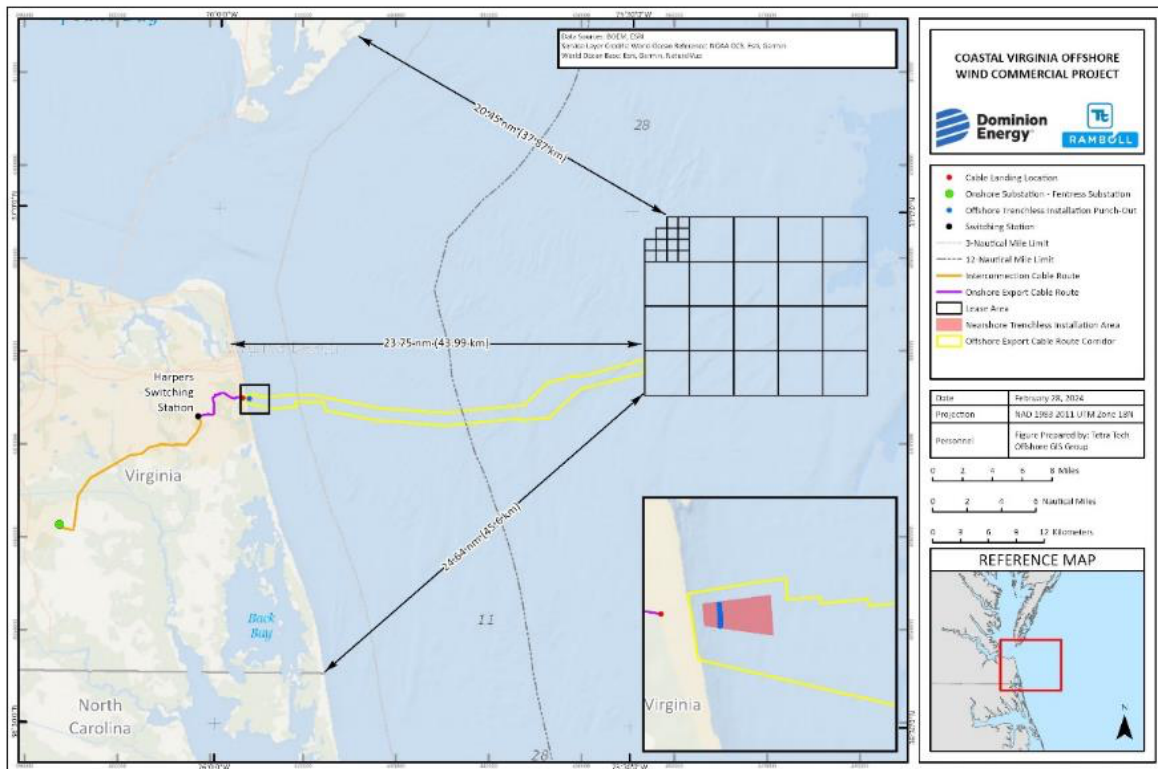


Figure 1: Boundary of CVOW project

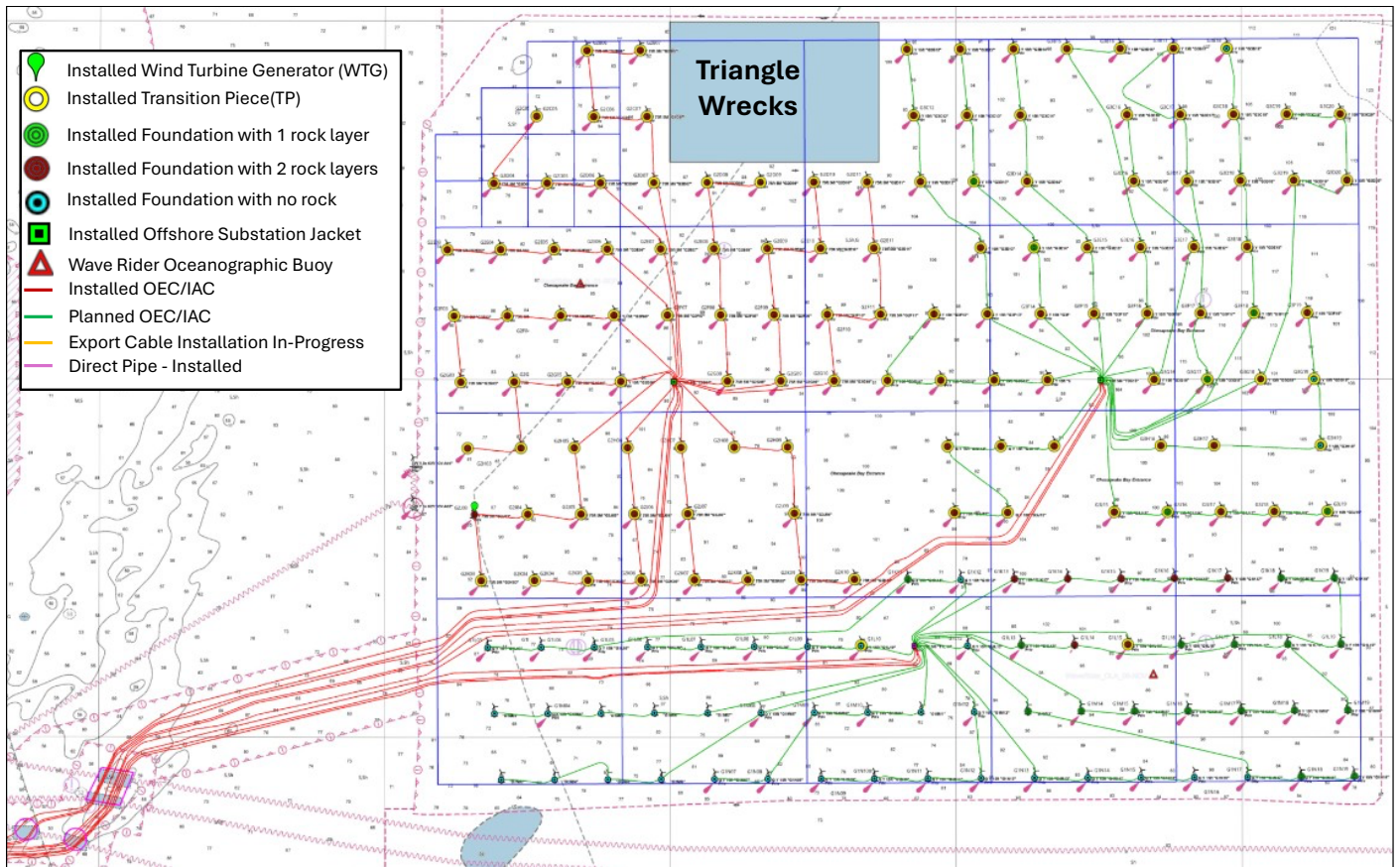


Figure 2: WTG and OSS Layout and Installation Status as of 31-JAN-2026

Work planned for the period of February 1 – February 28

Lease Area Activities

- The Wind Turbine Installation Vessel (WTIV) CHARYBDIS will conduct WTG installation in the northwestern third of the Lease Area.
 - The first WTG was installed at position J03 at the end of January 2026.
 - The CHARYBDIS will be supported by PAUL CANDIES, WINDEA RELIANCE, and PATRIOT LEADER.
- Installation activities for offshore substations (OSSs) continue:
 - OSS #1: Jacket and topside installation activities for OSS #1 will continue in February utilizing the ORION and supporting transport vessels.
 - OSS #2: Installation activities continue with the HOS RIVERBEND supporting OSS #2 commissioning.
 - OSS #3: Installation activities associated with OSS #3 continue, with the HOS RIVERBEND supporting commissioning.
 - In November 2025, the ORION completed OSS #3 jacket and topside installation on the previously installed jacket foundations.
 - The LIVING STONE will conduct cable pull-ins for OSS #3.
- The ORION will continue TP installations
 - The Uncrewed Surface Vessel (USV) DOLPHIN01, operated remotely from ORION, will conduct periodic survey operations of rock placement around MPs. Updates on specific locations will be

provided in the weekly [Local Notice to Mariners](#). To contact the vessel, coordinate through the Marine Coordination Center (MCC).

- There are no planned IAC installations during February. The HOS BLACK FOOT will support cable testing and terminations at TP sites.
- The M/V YELLOWSTONE will continue installing scour (rock) protection at the foundation bases.
- The NORTHSTAR NAVIGATOR will be conducting PLGR operations in NE quadrant of lease area

Deepwater OEC Activities

- Cable #9 will be Omega Jointed by LIVING STONE.
 - **Mariners are advised to exercise caution when operating in the vicinity of the Omega Jointing operations, the installation vessel is extremely limited in maneuverability due to the nature of the cable jointing activity (Figure 3).**

Shallow Water OEC Activities

- Cable #1 has been landed, with installation ongoing as weather permits. The ULISSE will install cable #8 following installation of cable #1.
 - **The USCG has established a moving Safety Zone with a 1000-yard radius surrounding the ULISSE while this work is ongoing. Please see the [Federal Register](#) for additional details.**
 - The ULISSE will be supported by anchor handling tugs (VOE VIKING, VOE EARL), cable handling vessels, diver support vessels, and dedicated safety vessels (tug WASHINGTON).
- The CURO will be conducting cable work and jointing of cable #4 along the cable corridor between 1-2 nm offshore.
 - Vessels are requested to maintain a 500-yard standoff distance from the activity due to the sensitive nature of the work.
 - The CURO will be supported by the ISABELLE and ANNABELLE MILLER.

Other Activities

- Safety vessels consisting of F/V NOREEN MARIE, F/V PONTOS, and tug WASHINGTON will support various project activities.
- Large project components will continue to arrive and be staged at the Portsmouth Marine Terminal (PMT).

CVOW GIS Shapefiles of the project area and export cable corridor are available [here](#) for download.

CVOW Marine Coordination Center

The CVOW project established a shoreside Marine Coordination Center (MCC) to monitor and coordinate all offshore activities related to project construction and operations. The MCC is staffed 24 hours a day, 7 days a week and can provide further project details if required.

Marine Coordination Center Contact Information	757-366-7000 (desk) 757-731-8307 (cell) Email: CVOWOps@dominionenergy.com
---	---

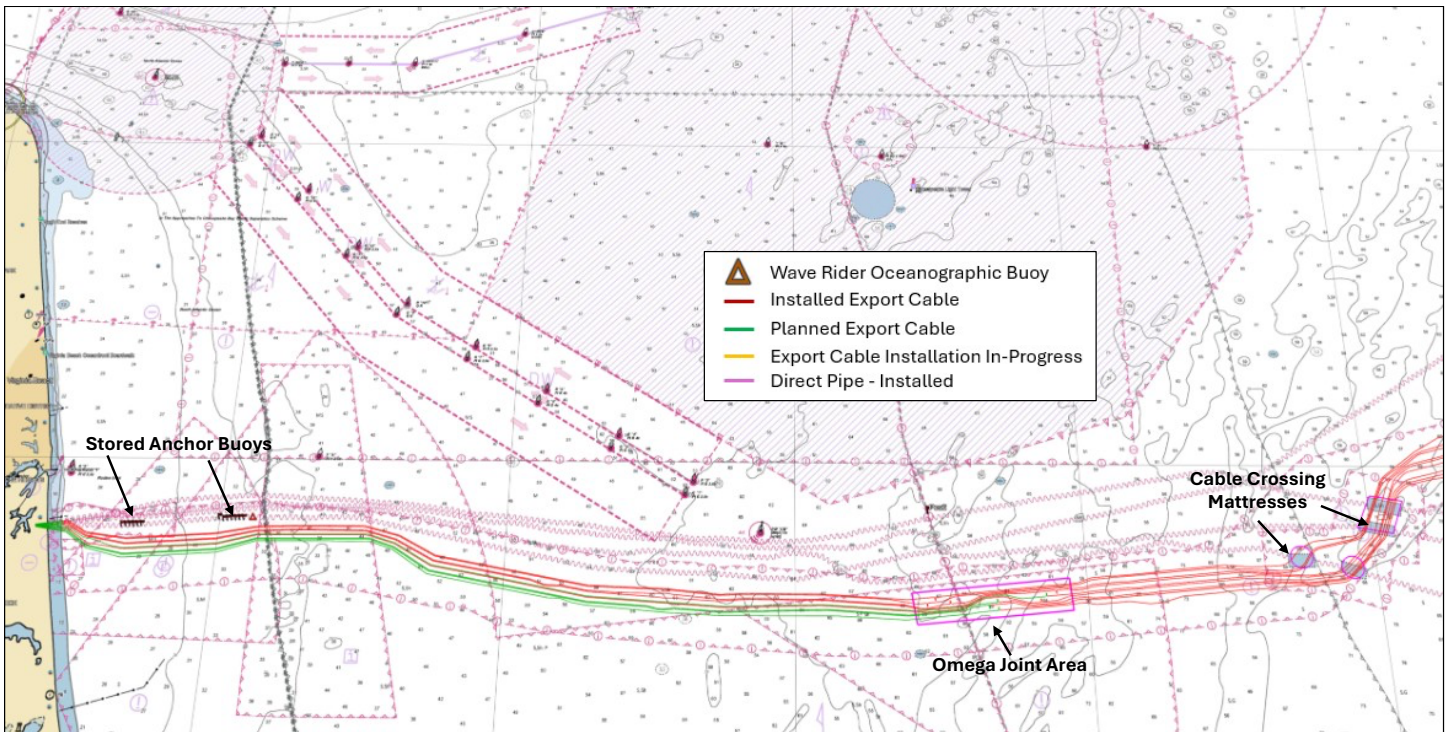


Figure 3: Positions for Omega Joint Operations and Cable Crossings are highlighted. Mariners should exercise caution when transiting in the vicinity of the Omega Joint Operations; the vessel is extremely limited in maneuverability due to cable jointing activity.

Offshore Installation Activities

The installation (pile driving) operations of MPs for the WTGs and pin piles for the OSSs resumed in May 2025, at the conclusion of the North Atlantic right whale migration period. As of the date of this publication, **all 176 MP foundations and all pin piles for the OSSs are complete; pile driving activity for the project has concluded.** Additionally, 121 of the 176 TPs have been installed, two (2) of three (3) OSS jacket foundations have been installed, two (2) of the three (3) OSS topsides have been installed, and the first WTG has been erected.

The CHARBYDIS (**Figure 4**)—the first Jones Act-compliant US flagged Wind Turbine Installation Vessel (WTIV) built in the United States—arrived September 17, 2025, in Hampton Roads, VA. The CHARYBDIS is expected to conduct WTG assembly in the western third of the Lease Area through the month of February. Mariners are requested to maintain wide berth around these activities, supported by a USCG enforced Safety Zone of 500 yards.

Cable installation and support activities, TP placement on MPs, scour protection installation, and OSS topside commissioning (**Figure 5**) will continue throughout the month along with other equipment testing and commissioning activities. The YELLOWSTONE will continue scour protection (rock) installation at the WTG foundation locations.

Mariners are requested to provide a wide berth to project vessels which may have maneuverability restrictions. Vessels can be reached via VHF CH 13/16 to coordinate passing arrangements if necessary. Specific locations for installed MPs, scour protection, and TPs are provided in a table at the end of this publication.



Image courtesy of [Dave S Photography](#)

Figure 4: WTIV CHARYBDIS will perform WTG installations in the Lease Area.



Figure 5: Installed TPs along “Row F” spaced 0.9-miles apart and Offshore Substation with Topside.

The **Uncrewed Surface Vessel (USV) DOLPHIN01 (AIS-MMSI 253000106) (Figure 6)**, operated remotely by licensed mariners and surveyors onboard the ORION, will continue survey operations supporting rock placement around MPs. Updates on specific locations for USV DOLPHIN01 operations will be provided in the USCG LNM weekly update. To contact the vessel, please coordinate through the CVOW Marine Coordination Center.

The Cable Lay Barge ULISSE will continue shallow water cable installation from the cable landing site to ~12-nautical miles offshore. This operation will be supported by anchor handling tugs, cable handling vessels, diver support vessels, and a dedicated safety vessel.

The project will continue to have safety vessels deployed in the area supporting specific operations. These will include commercial fishing vessels (e.g., F/V PONTOS and F/V NOREEN MARIE) and other vessels (e.g., Tug WASHINGTON) as needed. They are available 24/7 on VHF CH 16.

See the *Seabed Preparation and Cable Installation* section for more details.



Figure 6: Uncrewed Surface Vessel (USV) DOLPHIN01

Temporary Marine Lighting



Once MP, TP, and jackets are installed, quick-flashing yellow marine navigation lights will be installed and in operation from sunset to sunrise (**Figure 7**). MP foundations extend 15-feet above sea level.

MP lights will be repositioned on top of the TPs (~80' above sea level) as they are installed over the foundations. Updates to the lighting installations will be published in the [USCG Local Notice to Mariners](#) and [USCG Light List](#).

For up-to-date status of foundation installations, please refer to the USCG [Maritime Safety Information Products | Navigation Center](#).

Extreme caution should be exercised when operating in the area. Please report any malfunctioning lights to the safety vessel on site and/or the Marine Coordination Center.

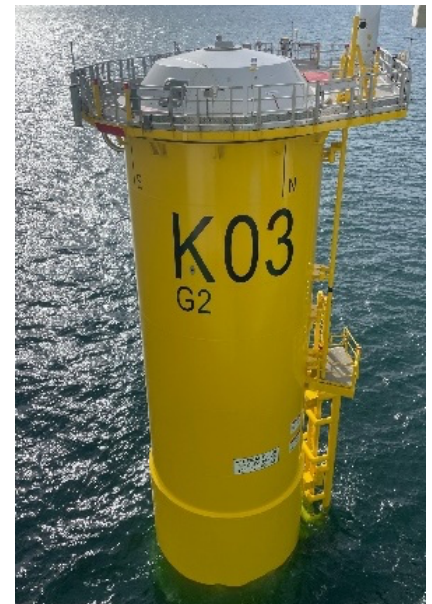




Figure 7: Lighted Navigation Lights on MP, OSS jacket foundations, and TPs

Seabed Preparation and Cable Installation

Cable installation operations will continue throughout the month within the cable corridor, which extends from a point approximately 400m offshore of State Military Reservation in Virginia Beach, Virginia, out to the OSS locations within the Lease Area.

Commercial fishermen utilizing fixed gear in the area of cable operations during this timeframe are requested to coordinate with the CVOW Fisheries Liaison (Ron Larsen: 570-242-5023) so that gear interactions can be avoided.

Inter-Array Cable Installation

The IAC installations within the northern half of the Lease Area continue throughout the month with CLV LIVING STONE. As of January 31, 2026, 59 of the planned 176 IAC cable sections have been installed.

Deepwater Cable Installation

All nine (9) deepwater sections and five (5) out of nine (9) shallow water sections of OECs have been installed, totaling nearly 421 km in length.

Concrete mattress and rock bags have been installed at crossings with the charted subsea telecommunications cables (**Table 1-1**) and other areas as needed. We ask that all mariners be mindful of these cables and avoid anchoring or any other seabed-impacting activities in the vicinity of the cables.

The Omega jointing operations, splicing together the nearshore OEC with the deepwater OEC, take ~10-days per cable. The LIVING STONE will continue OEC Omega Joint operations as needed. Each cable is secured at either end by a mushroom anchor until it is pulled into the OSS and/or the Omega Joint is completed. There are no Omega jointing operations planned for January.

Mariners should exercise caution when transiting in the vicinity of the Omega Joint operations. The vessels are extremely limited in maneuverability due to cable jointing activity. A 1,000-meter exclusion zone will be requested during these splicing operations. Reference the [latest LNM](#) for additional details.

Shallow Water Cable Installation

The ULISSE (**Figure 8**) continues its installation of OEC #1 this month and will subsequently support installation of OEC #8. Operations are highly weather dependent and will span from the shore landing to ~12 nautical miles offshore. The ULISSE will be supported by 6-9 vessels consisting of anchor handling tugs (VOE VIKING and VOE EARL), multiple work boats for cable handling (ANNABELLE MILLER, CAPT LES ELDRIDGE,

CORNISHMAN, KERNOW, etc.), dive support vessels (STORM DIVER), and dedicated safety vessels (MOR MARLIN, tug WASHINGTON). Up to eight (8) anchor lines are used to position the ULISSE during operations (**Figure 9**) and can reach nearly 1000-meters in length. As a result, the USCG has established a moving Safety Zone with a 1000-yard radius surrounding the ULISSE while this work is ongoing, as published in the [Federal Register](#) and noted below (**Figure 10**).

At the nearshore installation site there will be occasional diving operations, which will be referenced with the international dive flag flown on the vessel during active activities. The STORM DIVER or her support vessels will also be broadcasting “Securita” messages to alert nearby marine traffic. These nearshore operations should not interfere with normal beach activity such as swimming and surfing.

Cable remediation activities will be conducted with the CURO throughout the month on OEC #4, located approximately 1 – 2 nm from shore within the cable corridor. The CURO will be supported by the ISABELLE and ANNABELLE MILLER. These vessels will be limited in their abilities to maneuver due to the sensitive nature of the work. *Mariners are requested to use extreme caution when transiting in the area and to contact any of the on-site project vessels to coordinate passing arrangements on VHF CH 13/16. A temporary unlit red marker buoy will be installed marking subsea exposed infrastructure until activity is completed. **Mariners are cautioned against anchoring, dredging, or trawling in this area due to exposed subsea infrastructure.***

Table 1-1: Subsea telecommunications cable crossing locations.

Crossing Locations:	
DUNANT & MAREA Crossing Polygon (18 crossings in total):	
	• 36° 49.530'N - 75° 34.950'W
	• 36° 49.460'N - 75° 34.390'W
	• 36° 49.000'N - 75° 34.630'W
	• 36° 49.080'N - 75° 35.230'W
BRUSA East Circle (3 crossings) 0.15nm radius around:	
	• 36° 48.510'N - 75° 35.400'W
BRUSA West Circle (3 crossings) 0.15nm radius around:	
	• 36° 48.650'N - 75° 36.280'W



Figure 8: Cable Lay Barge ULISSE will be supporting cable landing and shallow water cable installation.

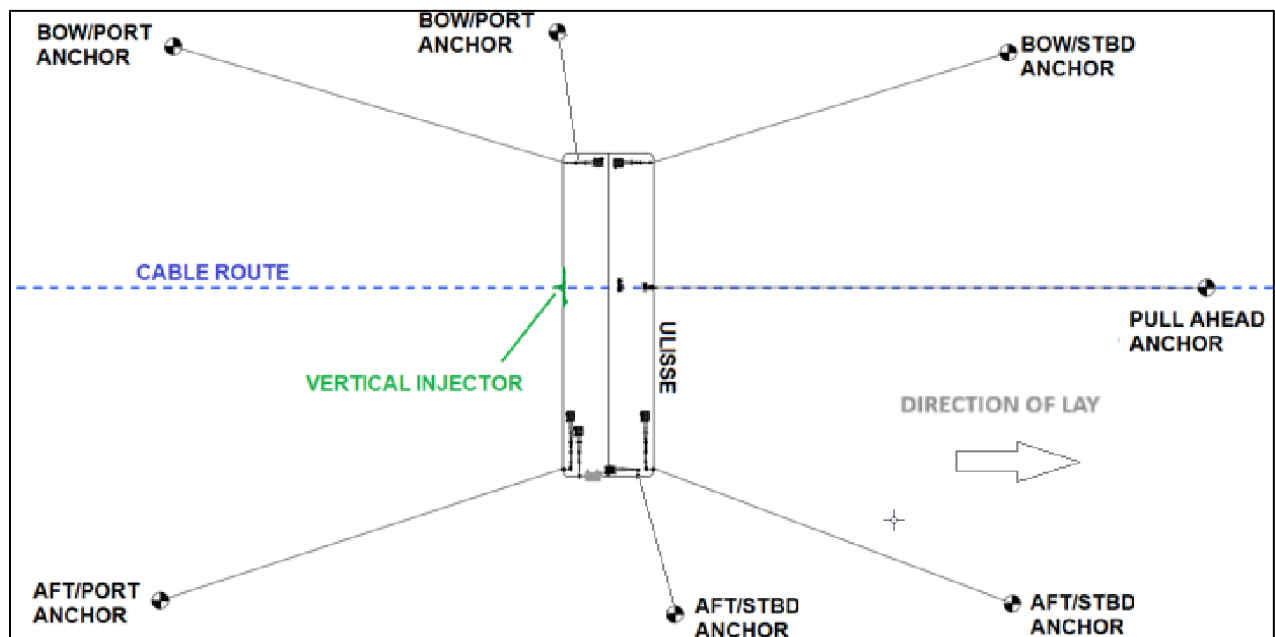


Figure 9: Cable Lay Barge ULISSE planned anchor configuration.

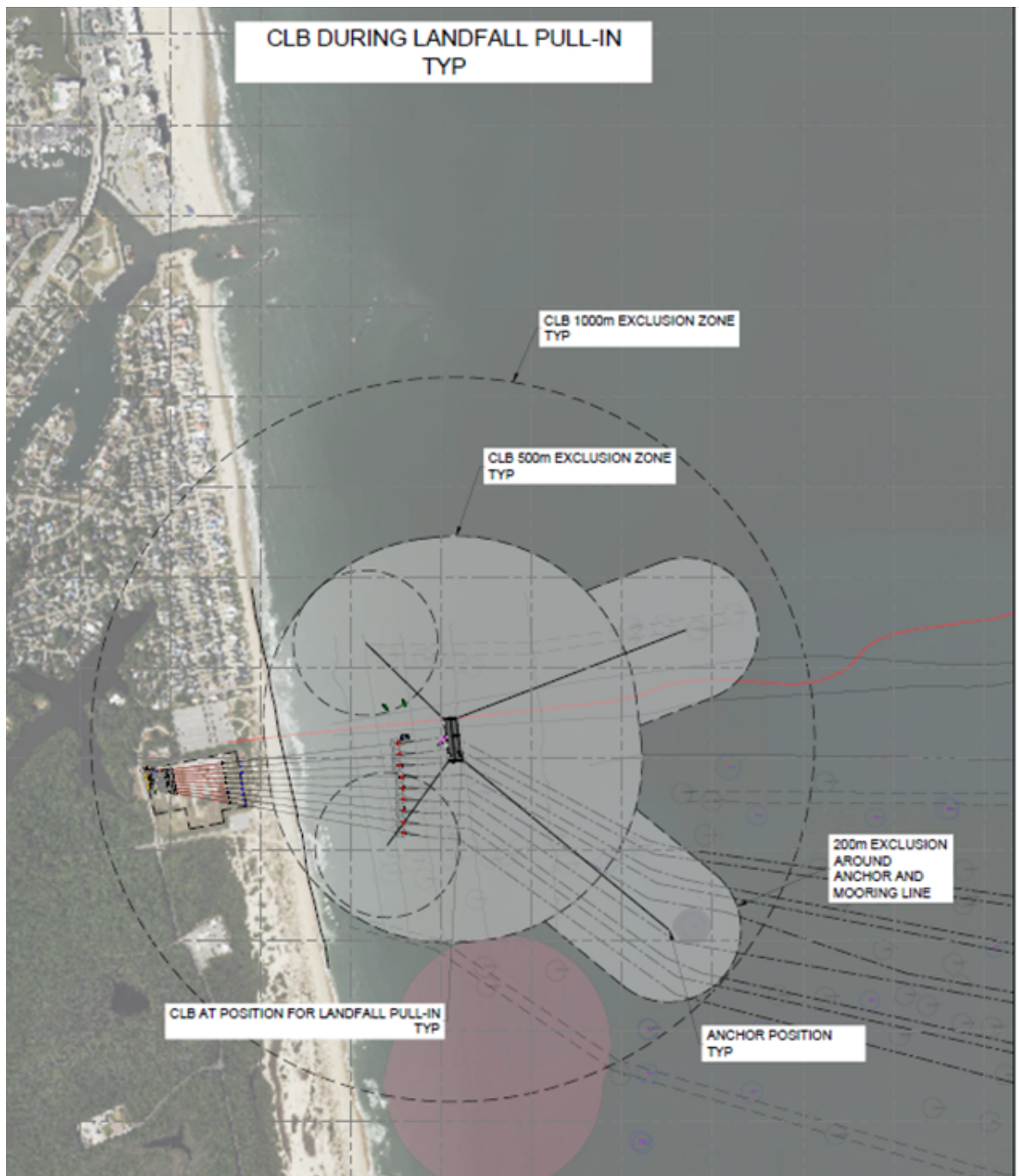


Figure 10: Exclusion zones to be implemented during cable landfall operations.

USCG Safety Zones in Effect at Installation Sites

1. The U.S. Coast Guard has established 179 temporary 500-yard safety zones around the construction of 176 wind turbine generators and three (3) offshore substations in Federal waters on the Outer Continental Shelf, east northeast of Virginia Beach, Virginia. This action is necessary to protect life, property and the environment during construction of the foundations and the subsequent installation of the turbine components, **from May 1, 2024, to May 1, 2027**. When enforced, only attending vessels and those vessels specifically authorized by the Fifth Coast Guard District Commander, or a designated representative, are permitted to enter or remain in the temporary safety zones. Each of the 179 temporary safety zones will be enforced individually, for a period lasting approximately 48 hours, as construction progresses from one structure to the next.

2. A moving Safety Zone with a **1000-yard radius** surrounding the **Cable Laying Barge ULISSE** will be in effect while conducting the near-shore cable installation work (within 12nm of the shoreline). Close to shore, there will be divers in the water to assist with cable pull-in operations, and throughout operations the ULISSE will have lengthy anchoring lines deployed that could create unseen entanglement hazards for transiting vessels in the area. It is recommended to establish communication with either the CVOW Marine Coordination Center or the on-site safety vessel on CH 16 to coordinate safe transit through the area. You may find a copy of the Notice of Proposed Rulemaking [here](#). Once in effect, the information will be broadcast by the USCG ahead of cable landing operations, and a copy of the rulemaking will be available on the “Resources” page of the CVOW website.

Port Operations

Throughout the month, large components such as TPs and Wind Turbine Generator (WTG) components including towers, nacelles and blades will continue to arrive and be staged at Portsmouth Marine Terminal (PMT).

Total Components Delivered to Portsmouth Marine Terminal	
MP Foundations	176
TPs	176
Towers	54
Nacelles	30
Blades	78
Offshore Substation Pin Piles	12
Pin Pile Templates	1

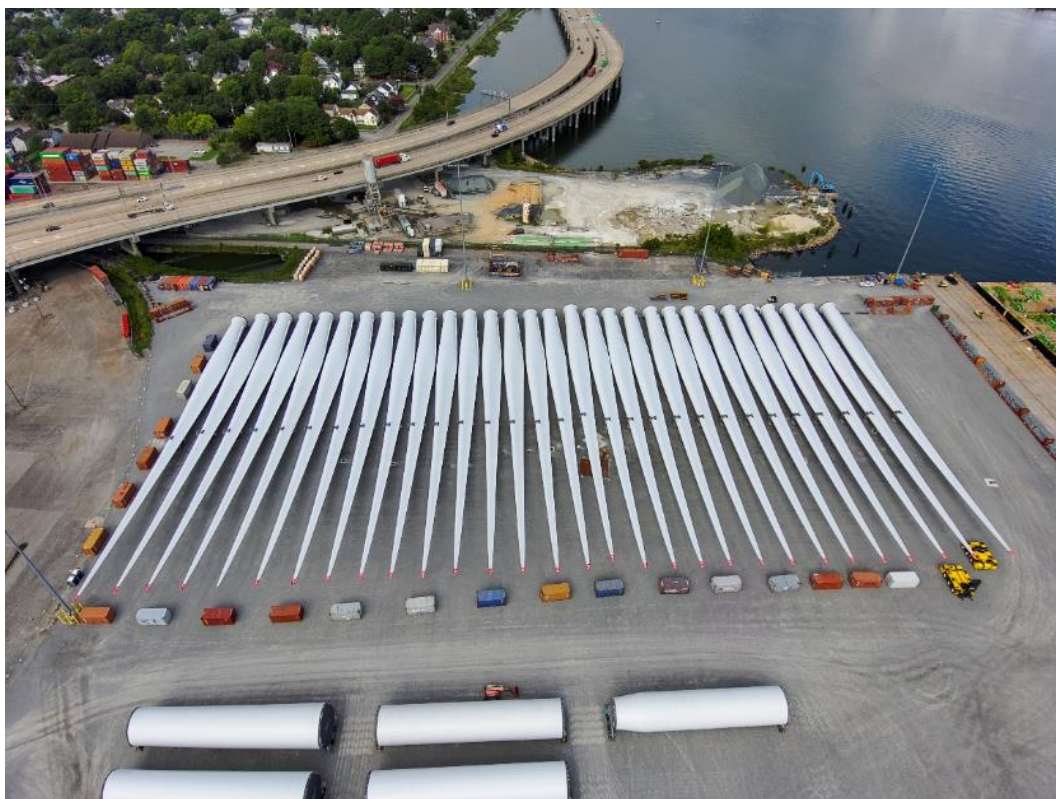


Figure 11: Portsmouth Marine Terminal – Staged WTG Blades



Figure 12: Completed Towers Quayside at Portsmouth Marine Terminal

Additional Offshore Activities

Buoy Deployment

There are currently three (3) oceanographic buoys (Wave Rider Buoy) deployed. All other buoys associated with the MP installation activities have been recovered.

The positions of these buoys may change throughout the installation period. Mariners should remain clear of these buoys to avoid damage and/or interference with their designated project monitoring activity.

NAME	BUOY TYPE	COORDINATES	DATE DEPLOYED
Wave Rider ECC	Wave Rider	36.818467°N 075.907017°W	10 March 2025
Wave Rider OLA 1	Wave Rider	36.938487°N 075.442920°W	01 September 2025
Wave Rider OLA6	Wave Rider	36.847484°N 075.275749°W	06 November 2025

Additionally, there are two (2) areas within three (3) miles south and east of Rudee Inlet where a series of tightly spaced surface buoys marking the positions of anchors deployed/stored on the seabed to support the anchoring positions of the cable lay barges. These “can buoys” are painted yellow with SOLAS reflective tape and lights to be fitted during hours of darkness. Each “can buoy” will have inflatable buoy, also fitted with SOLAS reflective tape, attached via 10 m polypropylene line. Please be mindful when navigating in the area, the buoy positions are given as follows:

Western Buoy Locations	Eastern Buoy Locations
36° 48.969' N 075° 56.670' W	36° 49.059 N 075° 54.912 W
36° 48.971' N 075° 56.599' W	36° 49.065 N 075° 54.842 W
36° 48.973' N 075° 56.529' W	36° 49.071 N 075° 54.772 W
36° 48.975' N 075° 56.460 W	36° 49.070 N 075° 54.700 W
36° 48.976' N 075° 56.393 W	36° 49.074 N 075° 54.630 W
36° 48.979' N 075° 56.323 W	36° 49.075 N 075° 54.563 W
	36° 49.085 N 075° 54.993 W

Fisheries

Fisheries Resource Characterization Studies

Dominion Energy continues working with the Virginia Institute of Marine Science (VIMS), the Virginia Marine Resource Commission (VMRC), and commercial fishermen to study Black Sea Bass, Channeled Whelk, and Atlantic Surfclam resources within the project area.

- **Channeled Whelk:** This study uses eighteen (18) strings of seven (7) pots, a 48-hour soak time and recovery by acoustic release buoys. This cooperative study is conducted in partnership with local commercial whelk fishermen. The study area includes the southern portion of the CVOW Lease Area (with future turbine locations) and a control area outside the Lease Area. Field activity for this study is expected to continue into the spring of 2026.

- **Black Sea Bass:** This study, conducted once per month, consisted of eight (8) strings of ventless traps with 6 traps per string and a 48-hour soak time. Acoustic release buoys were utilized to recover the gear. **The pre-construction field activity for this study has been completed.**
- **Atlantic Surfclam:** The final report for the Atlantic Surfclam surveys that were conducted in June of 2023 has been published and is available on the CVOW Project website [here](#). This survey was a collaborative effort between VIMS, Rutgers University, VMRC, and Dominion Energy. **The pre-construction field activity for this study has been completed.**

Information derived from these studies can be found on the [CVOW Resources](#) page.

Recreational Fisheries and Public Access

- ***All OSS locations will remain construction sites until commissioning activities are complete, no activity (e.g., fishing, diving, etc.) is permitted within 500-yards of the OSS structure.***
- Access to the Lease Area for recreational activities is unrestricted unless construction activities are active.
- A 500-yard USCG-enforced Safety Zone is in place when construction activities are occurring at the site of each WTG and/or OSS installation.
- If Mariners have questions about access, the onsite project safety vessels can provide direction via VHF Marine 16. Alternatively, mariners may reach out directly to the CVOW Marine Coordination Center (757-366-7000)

***** Mariners are reminded not to touch or tie off to MPs or OSSs and to remain vigilant for other vessels, including operational Project vessels, in the area. *****

CVOW Fisheries Compensatory Mitigation Program

The CVOW Fisheries Compensatory Mitigation Program has been established. The program is open to commercial and for-hire recreational fishing businesses that experience a demonstrated economic loss due to CVOW project construction and operations. Interested parties can find more information on the program website: <https://www.cvowfisheriescompensation.com/>.

Questions regarding eligibility or feedback on the structure of the program may be submitted to contact@cvowfisheriescompensation.com. Further details will be announced through direct outreach to potentially impacted parties, Mariner Updates, newsletters, and on the [CVOW Maritime Community Page](#).

Fishing Gear Loss/Damage Claim Form

Fishermen who have experienced lost or damaged fishing gear as a direct result of CVOW construction activities may file a claim for reimbursement. The Claim Form can be found [here](#). Questions should be directed to Ron Larsen or Michael Lewis.

Communications & Contact Information

We remain committed to maintaining communications with fishing communities and other mariners in the area via these periodic updates, informational speaking engagements and dock visits. This information is also posted on the CVOW website.

Mariners and the public are reminded that due to the nature of the construction activities, project vessels are often restricted in their ability to maneuver. It is requested that mariners communicate with project vessels on Channel 16 VHF to coordinate any necessary passing arrangements. Safety vessels will be on scene to assist with the coordination of commercial and public marine traffic and project vessels.

- Additional project information is available on the [CVOW project website](#).
- Sign up to receive USCG Local Notice to Mariners Updates: [Subscribe to Our RSS Feeds | Navigation Center \(uscg.gov\)](#)
- GIS Shapefiles of the project site are available on the [CVOW Mariners Page](#).
- USCG GIS-based LNM product to visualize project activities is available [here](#), announced in [this notice](#).

For additional information or requests for speaking engagements, please contact the following individuals or submit a comment on the CVOW website for response.

Ron Larsen
 Fisheries Liaison Officer
 Sea Risk Solutions
ronlarsen@searisksolutions.com
 570-242-5023

Michael Lewis
 CVOW Marine Affairs Manager
 Dominion Energy
michael.b.lewis@dominionenergy.com
 757-236-8222

Planned Project Vessels as of February 1, 2026

NAME	LENGTH	CALL SIGN	VESSEL NUMBER	MMSI	TYPE AND PURPOSE
Wind Turbine Generator (WTG) Installation and Support Vessels					
ALERT	140'	WCZ7335	9214381	366779420	Support Tug; TP Feeder
BARGE 455	400'	-	-	-	Transport Barge
CHARYBDIS	472'	KCDH	9941922	338146000	Offshore Wind Installation Vessel
JULIE B	400'	-	1201653	-	Transport Barge
OCEAN WAVE	146'	WDG3180	9554004	367523340	Support Tug; TP Feeder
ORION	705'	ORMB	9825453	205755000	Crane Ship; TP Installation Vessel
USV DOLPHIN01	18'	ORMB	N/A	253000106	Uncrewed Survey Vessel
YELLOWSTONE	623'	LXAM7	9464792	253000108	Special Vessel; Scour Protection Installation
Cable Installation and Seabed Preparation Vessels					
ANNABELLE MILLER	185'	WDL5902	9575113	368145530	Offshore Supply Ship; Cable Handling Support
CAPT. LES ELDRIDGE	59'	WDN7043	1205382	368304760	High Speed Craft; PLGS & CTV
CORNISHMAN	32'	WDP9760	N/A	368401810	Local Vessel; Nearshore Support & Survey
CURO	285'	PCSA	1042304	244193000	Cable Installation Vessel
HOS BLACK FOOT	302'	WDH3920	9647693	367612310	Offshore Supply Vessel; Cable Lay Support

NAME	LENGTH	CALL SIGN	VESSEL NUMBER	MMSI	TYPE AND PURPOSE
HOS RIVERBEND	292'	WDG9249	9647679	367585890	Offshore Supply Vessel; OSS Commissioning Support
ISABELLE	126'	WDN4623	7729502	368282680	Tug; Cable Support
KERNOW	32'	WDP9761	N/A	368401820	Local Vessel; Guard Vessel, CTV, Cable Handling Support
LIVING STONE	528'	PBXN	9776925	244010952	Multi-Purpose Offshore Vessel; Cable Lay & Omega Jointing
PAUL CANDIES	331'	WDJ8177	9679725	368013860	Offshore Support Vessel; Cable Installation Support
STORM DIVER	79'	MSET2	8311273	232061513	Diver Support Vessel; Nearshore Dive Ops
ULISSE	394'	9HA4326	8688535	249651000	Cable Lay Barge; Nearshore Cable Installation
VOE EARL	79'	2FEP6	9639983	235090599	Tug; Anchor Handling
VOE VIKING	85'	MHWM4	9331139	235008930	Tug; Anchor Handling
WYATT CANDIES	292'	WWYS	9620097	367543070	Offshore Support Vessel; Cable Installation Support
Safety Vessels					
WASHINGTON	120'	WDH3844	9730646	367611520	Tug; Project Safety Vessel
FV NOREEN MARIE	69'	WDE3392	N/A	367338460	Fishing Vessel; Project Safety Vessel
FV PONTOS	82'	WDJ2634	7832048	367087860	Fishing Vessel; Project Safety Vessel
MOR MARLIN	30'	21GG6	N/A	235109495	Safety Vessel; Project Safety Vessel
Transportation Vessels					
AAL DAMMAM	591'	CQ2193	9963554	255915735	Cargo Ship; Heavy Lift Transport Vessel
EMMA OLDENDORF	591'	CQEG7	9676606	255806378	Cargo Ship; Heavy Lift Transport Vessel
MARIA	498'	V2HZ7	9266566	304060000	Cargo Ship; Heavy Lift Transport Vessel
NASSAUBORG	570'	PHDU	9248564	246430000	Cargo Ship; Heavy Lift Transport Vessel
ROTRA FUTURA	531'	PHUJ	1035404	245697000	Cargo Ship; Heavy Lift Transport Vessel
ROTRA HORIZON	550'	PHTT	1035416	245691000	Cargo Ship; Heavy Lift Transport Vessel
SVENJA	527'	DIJA2	9458901	211577000	Cargo Ship; Heavy Lift Transport Vessel
Fisheries Resource Characterization Vessels					
FV DESIREE ALEXIS	46'	N/A	N/A	338363138	Commercial Fishing Vessel
FV THOMAS REED	49'	SURV1	N/A	367187470	Commercial Fishing Vessel; Fisheries Studies
Crew Transfer Vessels (CTV)					
ATLANTIC ENDEAVOR	62'	WDL8441	N/A	368169560	High Speed Craft; CTV
ATLANTIC ENDURANCE	78'	WDQ4264	N/A	368424010	High Speed Craft; CTV
GAMEKEEPER	98'	WDP9841	1101928	368402460	Offshore Supply Vessel; CTV
PATRIOT LEADER	86'	WDP5660	N/A	368365460	High Speed Craft; CTV
WINDEA COURAGEOUS	101'	WDP2409	N/A	368336010	High Speed Craft; CTV

NAME	LENGTH	CALL SIGN	VESSEL NUMBER	MMSI	TYPE AND PURPOSE
WINDEA RANGER	91'	WDP4760	N/A	368357430	High Speed Craft; CTV
WINDSERVE ODYSSEY	65'	WDL5830	N/A	369389000	High Speed Craft; CTV

Installed Components as of January 31, 2026

#	WTG ID	Coordinates	Foundation Installation Date	Scour Protection	Transition Piece	WTG Erected
1	G2K04	36.869196°N 075.456227°W	22-May-24	✓	✓	
2	G2J05	36.884680°N 075.442662°W	26-May-24	✓	✓	
3	G2J04	36.884621°N 075.458216°W	28-May-24	✓	✓	27-Jan-26
4	G2J03	36.884560°N 075.473769°W	31-May-24	✓	✓	
5	G2H05	36.900106°N 075.444659°W	4-Jun-24	✓	✓	
6	G2H06	36.900163°N 075.429103°W	7-Jun-24	✓	✓	
7	G2K03	36.869135°N 075.471777°W	8-Jun-24	✓	✓	
8	G2J06	36.884737°N 075.427109°W	14-Jun-24	✓	✓	
9	G2H04	36.900047°N 075.460216°W	16-Jun-24	✓	✓	
10	G2H03	36.899985°N 075.475772°W	17-Jun-24	✓	✓	
11	G2K05	36.869255°N 075.440677°W	18-Jun-24	✓	✓	
12	G2G06	36.915589°N 075.431087°W	19-Jun-24	✓	✓	
13	G2G05	36.915531°N 075.446646°W	20-Jun-24	✓	✓	
14	G2F07	36.931061°N 075.417520°W	22-Jun-24	✓	✓	
15	G2E07	36.946487°N 075.419502°W	23-Jun-24	✓	✓	
16	G2F06	36.931005°N 075.433082°W	25-Jun-24	✓	✓	
17	G2F03	36.930826°N 075.479770°W	26-Jun-24	✓	✓	
18	G2G03	36.915410°N 075.477765°W	28-Jun-24	✓	✓	
19	G2F04	36.930888°N 075.464208°W	29-Jun-24	✓	✓	
20	G2F05	36.930947°N 075.448645°W	1-Jul-24	✓	✓	
21	G2E06	36.946431°N 075.435068°W	2-Jul-24	✓	✓	

#	WTG ID	Coordinates	Foundation Installation Date	Scour Protection	Transition Piece	WTG Erected
22	G2E05	36.946373°N 075.450634°W	3-Jul-24	✓	✓	
23	G2E03	36.946250°N 075.481765°W	4-Jul-24	✓	✓	
24	G2D06	36.961856°N 075.437065°W	5-Jul-24	✓	✓	
25	G2D04	36.961737°N 075.468203°W	6-Jul-24	✓	✓	
26	G2C05	36.977382°N 075.455728°W	9-Jul-24	✓	✓	
27	G2D05	36.961798°N 075.452634°W	10-Jul-24	✓		
28	G2D07	36.961912°N 075.421496°W	13-Jul-24	✓	✓	
29	G2D08	36.961966°N 075.405927°W	14-Jul-24	✓	✓	
30	G2B06	36.992697°N 075.441051°W	15-Jul-24	✓	✓	
31	G2C07	36.977338°N 075.423486°W	16-Jul-24	✓	✓	
32	G2C06	36.977281°N 075.439052°W	17-Jul-24	✓	✓	
33	G2E08	36.946541°N 075.403936°W	19-Jul-24	✓	✓	
34	G2B07	36.992754°N 075.425476°W	20-Jul-24	✓	✓	
35	G2D09	36.962019°N 075.390358°W	21-Jul-24	✓	✓	
36	G2F08	36.931114°N 075.401957°W	22-Jul-24	✓	✓	
37	G2G08	36.915697°N 075.399967°W	22-Jul-24	✓	✓	
38	G2G04	36.915697°N 075.399967°W	25-Jul-24	✓	✓	
39	G2D11	36.962117°N 075.359220°W	28-Jul-24	✓	✓	
40	G2E11	36.946690°N 075.357238°W	29-Jul-24	✓	✓	
41	G2D10	36.962069°N 075.374789°W	29-Jul-24	✓	✓	
42	G2E09	36.946592°N 075.388370°W	31-Jul-24	✓	✓	
43	G2H08	36.900271°N 075.397990°W	2-Aug-24	✓	✓	
44	G2F11	36.931263°N 075.355268°W	3-Aug-24	✓	✓	
45	G2F10	36.931216°N 075.370831°W	4-Aug-24	✓	✓	
46	G2G10	36.915798°N 075.368848°W	5-Aug-24	✓	✓	

#	WTG ID	Coordinates	Foundation Installation Date	Scour Protection	Transition Piece	WTG Erected
47	G2F09	36.931166°N 075.386394°W	6-Aug-24	✓	✓	
48	G2G09	36.915749°N 075.384408°W	7-Aug-24	✓	✓	
49	G2J07	36.884792°N 075.411556°W	10-Aug-24	✓	✓	
50	G2H09	36.900322°N 075.382433°W	11-Aug-24	✓	✓	
51	G2J09	36.884896°N 075.380449°W	12-Aug-24	✓	✓	
52	G2K09	36.869469°N 075.378476°W	12-Aug-24	✓	✓	
53	G2K08	36.869419°N 075.394026°W	13-Aug-24	✓	✓	
54	G2K07	36.869366°N 075.409577°W	14-Aug-24	✓	✓	
55	G3H12	36.900463°N 075.335763°W	18-Aug-24	✓	✓	
56	G2K10	36.869518°N 075.362926°W	21-Aug-24	✓	✓	
57	G2H07	36.900218°N 075.413546°W	21-Aug-24	✓	✓	
58	G2K06	36.869311°N 075.425127°W	22-Aug-24	✓	✓	
59	G3H13	36.900506°N 075.320207°W	23-Aug-24	✓	✓	
60	G3J13	36.885079°N 075.318235°W	23-Aug-24	✓	✓	
61	G3G11	36.915845°N 075.353288°W	25-Aug-24	✓	✓	
62	G3J12	36.885036°N 075.333788°W	26-Aug-24	✓	✓	
63	G3H14	36.900547°N 075.304650°W	26-Aug-24	✓	✓	
64	G3G14	36.915975°N 075.306609°W	27-Aug-24	✓	✓	
65	G3G13	36.915934°N 075.322169°W	28-Aug-24	✓	✓	
66	G3G12	36.915891°N 075.337728°W	29-Aug-24	✓	✓	
67	G2E04	36.946312°N 075.466199°W	31-Aug-24	✓	✓	
68	G2E10	36.946642°N 075.372804°W	1-Sep-24	✓	✓	
69	G3F12	36.931309°N 075.339705°W	2-Sep-24	✓	✓	
70	G3F13	36.931352°N 075.324142°W	8-Sep-24	✓	✓	
71	G3C13	36.977634°N 075.330046°W	9-Sep-24	✓	✓	

#	WTG ID	Coordinates	Foundation Installation Date	Scour Protection	Transition Piece	WTG Erected
72	G3B12	36.993008°N 075.347599°W	11-Sep-24	✓	✓	
73	G3C14	36.977677°N 075.314474°W	12-Sep-24	✓	✓	
74	G3E13	36.946780°N 075.326106°W	12-Sep-24	✓	✓	
75	G3D12	36.962163°N 075.343650°W	13-Sep-24	✓	✓	
76	G3E14	36.946821°N 075.310540°W	19-Sep-24	✓	✓	
77	G3D13	36.962207°N 075.328081°W	20-Sep-24	✓	✓	
78	G3B14	36.993095°N 075.316448°W	23-Sep-24	✓	✓	
79	G1K14	36.869691°N 075.300724°W	2-May-25	✓		
80	G1K15	36.869730°N 075.285173°W	4-May-25	✓		
81	G1K12	36.869609°N 075.331825°W	5-May-25			
82	G1K13	36.869651°N 075.316274°W	7-May-25	✓		
83	G1K19	36.869863°N 075.222971°W	8-May-25	✓		
84	G1M18	36.838983°N 075.234624°W	11-May-25	✓		
85	G1K18	36.869832°N 075.238522°W	12-May-25	✓		
86	G1M19	36.839013°N 075.219079°W	13-May-25	✓		
87	G1L16	36.854350°N 075.267667°W	16-May-25	✓		
88	G1L19	36.854442°N 075.221019°W	18-May-25	✓		
89	G1K17	36.869800°N 075.254072°W	19-May-25	✓		
90	G1L18	36.854412°N 075.236567°W	20-May-25	✓		
91	G1L13	36.854232°N 075.314304°W	23-May-25			
92	G1K11	36.869564°N 075.347375°W	24-May-25	✓		
93	G1L15	36.854310°N 075.283209°W	25-May-25	✓	✓	
94	G1M17	36.838951°N 075.250168°W	26-May-25	✓		
95	G1N11	36.823291°N 075.341459°W	27-May-25			
96	G1L14	36.854272°N 075.298757°W	28-May-25	✓		

#	WTG ID	Coordinates	Foundation Installation Date	Scour Protection	Transition Piece	WTG Erected
97	G3J17	36.885229°N 075.256020°W	30-May-25		✓	
98	G1K16	36.869766°N 075.269623°W	2-Jun-25	✓		
99	G1N17	36.823522°N 075.248212°W	1-Jun-25			
100	G1L12	36.854190°N 075.329851°W	2-Jun-25			
101	G1N18	36.823554°N 075.232671°W	3-Jun-25	✓		
102	G1N19	36.823583°N 075.217129°W	4-Jun-25	✓		
103	G3B15	36.993136°N 075.300872°W	6-Jun-25	✓	✓	
104	G3B16	36.993174°N 075.285297°W	7-Jun-25	✓	✓	
105	G3B17	36.993210°N 075.269721°W	8-Jun-25	✓	✓	
106	G3C16	36.977755°N 075.283329°W	9-Jun-25	✓	✓	
107	G3B18	36.993245°N 075.254145°W	9-Jun-25		✓	
108	G3E18	36.946968°N 075.248275°W	10-Jun-25		✓	
109	G3D16	36.962327°N 075.281373°W	3-Jul-25	✓	✓	
110	G3F15	36.931433°N 075.293016°W	4-Jul-25	✓	✓	
111	G3G18	36.916119°N 075.244369°W	5-Jul-25	✓	✓	
112	G3F17	36.931506°N 075.261890°W	5-Jul-25	✓	✓	
113	G3G19	36°54.969'N 075°13.729'W	6-Jul-25		✓	
114	G3E16	36.946900°N 075.279400°W	8-Jul-25	✓	✓	
115	G3F14	36.931394°N 075.308579°W	10-Jul-25	✓	✓	
116	G3F18	36.931539°N 075.246327°W	11-Jul-25		✓	
117	G3F19	36.931570°N 075.230764°W	11-Jul-25		✓	
118	G3F16	36.931471°N 075.277453°W	11-Jul-25	✓	✓	
119	G3E17	36.946934°N 075.263841°W	18-Jul-25	✓	✓	
120	G3D19	36.962428°N 075.234665°W	18-Jul-25		✓	
121	G3D18	36.962397°N 075.250234°W	19-Jul-25	✓	✓	

#	WTG ID	Coordinates	Foundation Installation Date	Scour Protection	Transition Piece	WTG Erected
122	G3C20	36.977887°N 075.221039°W	20-Jul-25	✓	✓	
123	G3D20	36.962458°N 075.219096°W	20-Jul-25		✓	
124	G3C18	36.977825°N 075.252184°W	23-Jul-25		✓	
125	G3D14	36.962250°N 075.312517°W	24-Jul-25	✓	✓	
126	G3C17	36.977791°N 075.267756°W	24-Jul-25	✓	✓	
127	G3C12	36.977590°N 075.345619°W	25-Jul-25	✓	✓	
128	G3C19	36.977857°N 075.236611°W	26-Jul-25	✓	✓	
129	G3B13	36.993050°N 075.332017°W	26-Jul-25	✓	✓	
130	G3E15	36.946867°N 075.294967°W	28-Jul-25	✓	✓	
131	G3D17	36.962363°N 075.265804°W	28-Jul-25	✓	✓	
132	G3G17	36.916086°N 075.259929°W	29-Jul-25	✓	✓	
133	G3H16	36.900623°N 075.273536°W	30-Jul-25	✓	✓	
134	G3G16	36.916051°N 075.275489°W	1-Aug-25	✓	✓	
135	G1L17	36.854380°N 075.252114°W	5-Aug-25			
136	G3H17	36.900650°N 075.257983°W	5-Aug-25		✓	
137	G3H19	36.900721°N 075.226866°W	6-Aug-25		✓	
138	G1N16	36.823489°N 075.263753°W	10-Aug-25			
139	G3J16	36.885200°N 075.271567°W	10-Aug-25	✓	✓	
140	G1N15	36.823450°N 075.279300°W	11-Aug-25			
141	G3J19	36.885292°N 075.224912°W	12-Aug-25		✓	
142	G3J18	36.885267°N 075.240467°W	13-Aug-25		✓	
143	G1M15	36.838882°N 075.281257°W	13-Aug-25			
144	G1M16	36.838918°N 075.265713°W	14-Aug-25			
145	G3J15	36.885150°N 075.287133°W	16-Aug-25	✓	✓	
146	G1N14	36.823416°N 075.294835°W	17-Aug-25			

#	WTG ID	Coordinates	Foundation Installation Date	Scour Protection	Transition Piece	WTG Erected
147	G1L08	36.854000°N 075.392033°W	17-Aug-25			
148	G1N13	36.823376°N 075.310376°W	26-Aug-25			
149	G1M12	36.838763°N 075.327890°W	27-Aug-25			
150	G1L09	36.854052°N 075.376493°W	27-Aug-25			
151	G1M14	36.838844°N 075.296801°W	28-Aug-25			
152	G1M08	36.838575°N 075.390066°W	29-Aug-25			
153	G1N12	36.823335°N 075.325918°W	31-Aug-25			
154	G1L10	36.854100°N 075.360946°W	2-Sep-25		✓	
155	G1N08	36.823148°N 075.388082°W	3-Sep-25			
156	G1M09	36.838625°N 075.374522°W	3-Sep-25			
157	G1L06	36.853895°N 075.423135°W	4-Sep-25			
158	G1L05	36.853838°N 075.438682°W	5-Sep-25			
159	G1L07	36.853949°N 075.407587°W	5-Sep-25			
160	G1M04	36.838355°N 075.452242°W	6-Sep-25			
161	G1L04	36.853780°N 075.454229°W	7-Sep-25			
162	G1N10	36.823246°N 075.357000°W	12-Sep-25			
163	G1L03	36.853719°N 075.469776°W	12-Sep-25			
164	G1M10	36.838673°N 075.358978°W	13-Sep-25			
165	G1N09	36.823198°N 075.372541°W	14-Sep-25			
166	G1N07	36.823096°N 075.403623°W	14-Sep-25			
167	G1M11	36.838719°N 075.343434°W	18-Sep-25			
168	G1N06	36.823043°N 075.419163°W	19-Sep-25			
169	G1N03	36.822869°N 075.465786°W	24-Sep-25			
170	G1M03	36.838294°N 075.467786°W	25-Sep-25			
171	G1N05	36.822987°N 075.434704°W	26-Sep-25			

#	WTG ID	Coordinates	Foundation Installation Date	Scour Protection	Transition Piece	WTG Erected
172	G1M06	36.838469°N 075.421154°W	26-Sep-25			
173	G1M13	36.838804°N 075.312345°W	27-Sep-25			
174	G1M05	36.838413°N 075.436698°W	29-Sep-25			
175	G1M07	36.838523°N 075.40561°W	7-Oct-25			
176	G1N04	36.822929°N 075.450245°W	7-Oct-25			
Offshore Substations (OSS)						
1	OSS #1	36.854146°N 075.345399°W	21 June 2025	Pin Piles Only		
2	OSS #2	36.915644°N 075.415527°W	21 June 2025	Pin Piles, Jacket & Topside		
3	OSS #3	36.916014°N 075.291049°W	26 October 2025	Pin Piles, Jacket & Topside		