

Monthly Mariner's Update Coastal Virginia Offshore Wind (CVOW)	Date of Applicability:	01 January 2026
	Issue:	01/26
	Revision:	00

The goal of the Monthly Mariner's Update is to give a high-level overview of ongoing and planned near-term construction activities, and the vessels involved. Questions regarding construction operations are welcome, preferably well in advance of each construction activity. These questions and comments can be directed [here](#).

- *The USCG has created a GIS-based Local Notice to Mariners product that is useful in visualizing project activities (Select Marine Construction Layer)- [Maritime Safety Information Products | Navigation Center](#)*
- *USCG Notice: Introducing the New [NAVCEN Maritime Safety Information Application](#)*
- *Previous issues of the CVOW Mariner's Update and additional resources can be found [here](#).*

Dominion Energy's Coastal Virginia Offshore Wind – Commercial Project is complying with the Director's Order issued by the Bureau of Ocean Energy Management on Monday, December 22, 2025. Ongoing activities related to the Coastal Virginia Offshore Wind – Commercial Project on the outer continental shelf have been suspended, with the exception of certain commissioning activities related to the safety and environmental protections of equipment and personnel offshore. Even though all ongoing activities at this project are suspended, you may see vessels performing activities that are necessary to respond to emergency situations and/or prevent impacts to health, safety, and the environment. The CVOW – Pilot project remains in operation as it is not part of the Director's Order.

Project Background Information

Virginia Electric and Power Company d/b/a Dominion Energy Virginia (Dominion Energy) is constructing and will operate the Coastal Virginia Offshore Wind Project (Project or CVOW). The Project is located in the Commercial Lease of Submerged Lands for Renewable Energy Development on the Outer Continental Shelf Offshore Virginia - Lease No. OCS-A 0483 (Lease Area), with buried subsea cables connecting CVOW to shore (**Figure 1**). The purpose of this Project is to provide 2.6 gigawatts of clean, reliable offshore wind energy to our customers while providing substantial economic and environmental benefits to the Commonwealth of Virginia.

Offshore components of the Project will consist of the following:

- One hundred seventy-six (176) Wind Turbine Generators (WTGs), each with a capacity of 14.7 megawatts, and associated MP foundations;
- Three (3) Offshore Substations (OSS);
- Approximately 231 miles (372 kilometers) of total length of Inter-Array Cables (IACs) in the CVOW Lease Area; average IAC length of 5,868 feet (1,789 meters) between WTGs and connected to OSSs; and
- Nine (9) buried submarine high-voltage alternating-current Offshore Export Cables (OECs), approximately 350 miles (563 kilometers) of total length, connecting the OSSs to shore at the State Military Reservation in Virginia Beach, Virginia.

The offshore project components, including the WTGs, OSSs, IACs and OECs, will be located in federal waters in the Lease Area (**Figure 2**). Portions of the OECs will also be located in Commonwealth of Virginia waters (within three miles of shore).

CVOW GIS Shapefiles of the project area and export cable corridor are available [here](#) for download.

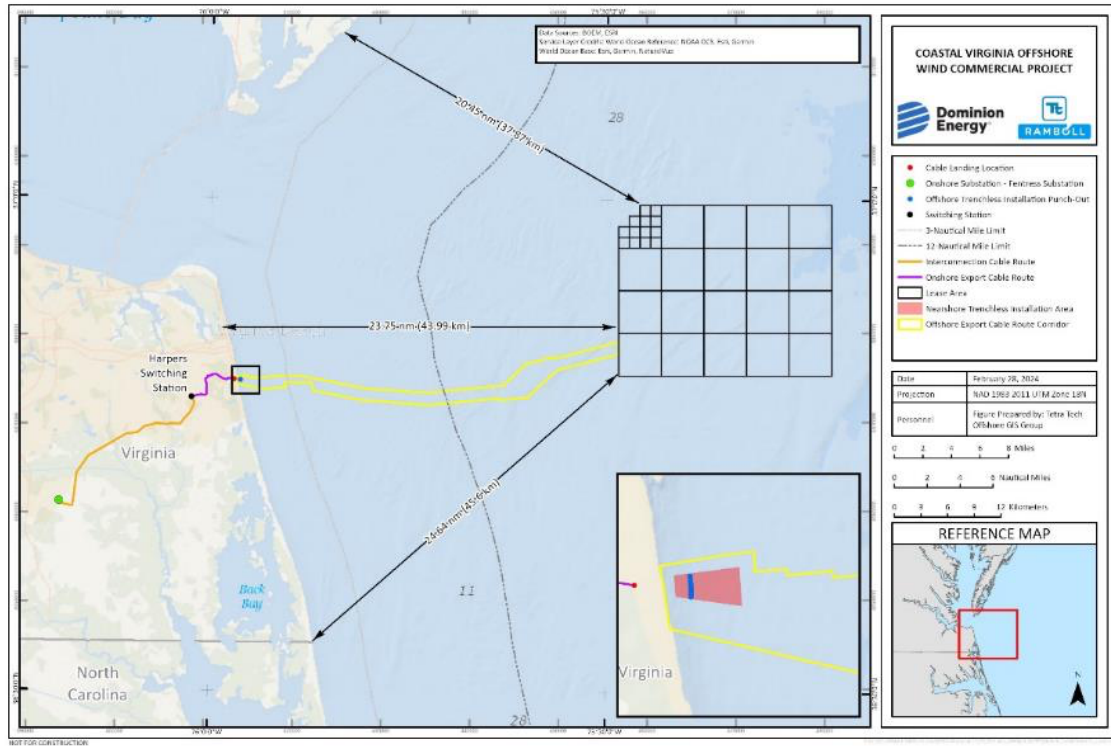


Figure 1: Boundary of CVOW project

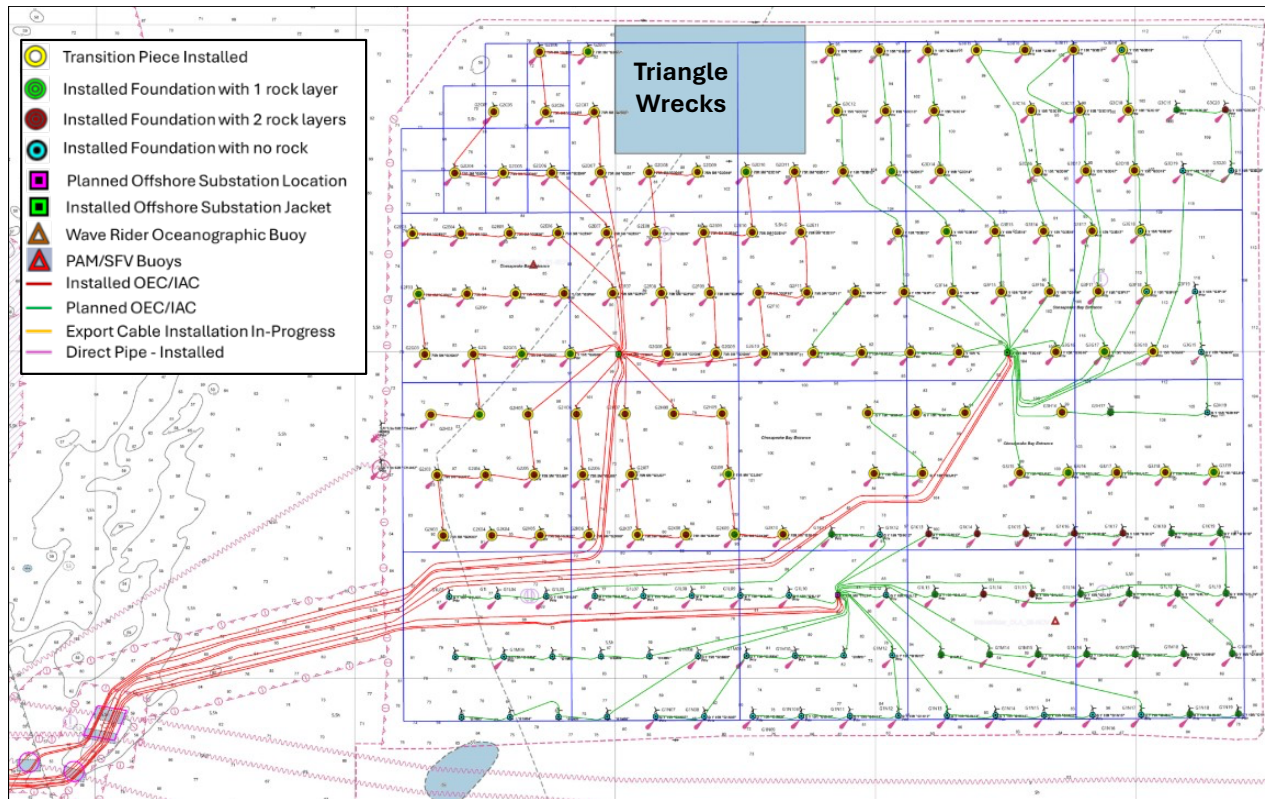


Figure 2: WTG and OSS Layout and Installation Status as of 31-DEC-2025

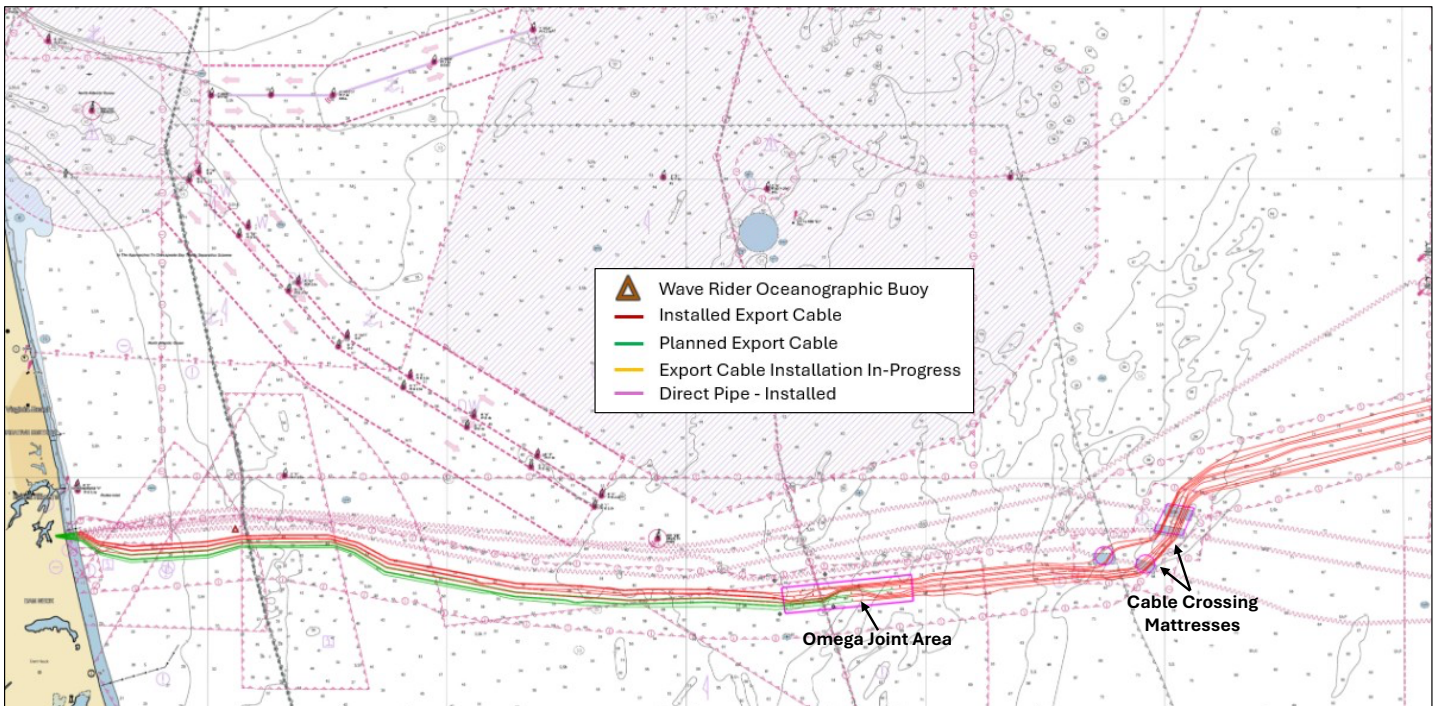


Figure 3: OEC Installation Status as of 31-DEC-2025; positions for Omega Joint Operations and Cable Crossings are highlighted. Mariners should exercise caution when transiting in the vicinity of the Omega Joint Operations; the vessel is extremely limited in maneuverability due to cable jointing activity.

CVOW Marine Coordination Center

The CVOW project established a shoreside Marine Coordination Center (MCC) to monitor and coordinate all offshore activities related to project construction and operations. The MCC is staffed 24 hours a day, 7 days a week and can provide further project details if required.

Marine Coordination Center Contact Information	757-366-7000 (desk) 757-731-8307 (cell) Email: CVOWOps@dominionenergy.com
---	---

Offshore Installation Status

The installation (pile driving) operations of MPs for the WTGs and pin piles for the OSSs resumed in May 2025, at the conclusion of the North Atlantic right whale migration period. As of the date of this publication, **all 176 MP foundations and all pin piles for the OSSs are complete; pile driving activity for the project has concluded.** Additionally, 109 of the 176 TPs have been installed, two (2) of three (3) OSS jacket foundations have been installed, and two (2) of the three (3) OSS topsides have been installed.

Specific locations for installed MPs, scour protection, and TPs are provided in a table at the end of this publication.

Temporary Marine Lighting



Once MP, TP, and jackets are installed, quick-flashing yellow marine navigation lights will be installed and in operation from sunset to sunrise. MP foundations extend 15-feet above sea level.

MP lights will be repositioned on top of the TPs (~80' above sea level) as they are installed over the foundations. Updates to the lighting installations will be published in the [USCG Local Notice to Mariners](#) and [USCG Light List](#).

For up-to-date status of foundation installations, please refer to the USCG [Maritime Safety Information Products | Navigation Center](#).

Extreme caution should be exercised when operating in the area. Please report any malfunctioning lights to the safety vessel on site and/or the Marine Coordination Center.

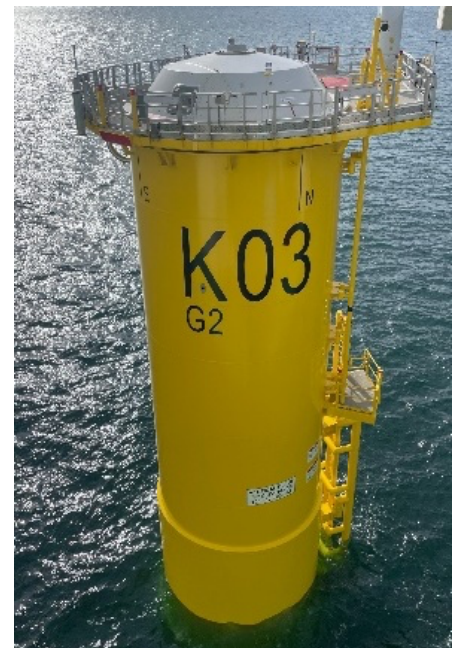




Figure 4: Lighted Navigation Lights on MP, OSS jacket foundations, and TPs

Additional Offshore Information

Table 1-1: Subsea telecommunications cable crossing locations.

Crossing Locations:	
DUNANT & MAREA Crossing Polygon (18 crossings in total):	
	• 36° 49.530'N - 75° 34.950'W
	• 36° 49.460'N - 75° 34.390'W
	• 36° 49.000'N - 75° 34.630'W
	• 36° 49.080'N - 75° 35.230'W
BRUSA East Circle (3 crossings) 0.15nm radius around:	
	• 36° 48.510'N - 75° 35.400'W
BRUSA West Circle (3 crossings) 0.15nm radius around:	
	• 36° 48.650'N - 75° 36.280'W

Buoy Deployment

There are currently three (3) oceanographic buoys (Wave Rider Buoy) deployed. All other buoys associated with the MP installation activities have been recovered.

The positions of these buoys may change throughout the installation period. Mariners should remain clear of these buoys to avoid damage and/or interference with their designated project monitoring activity.

NAME	BUOY TYPE	COORDINATES	DATE DEPLOYED
Wave Rider ECC	Wave Rider	36.818467°N 075.907017°W	10 March 2025
Wave Rider OLA 1	Wave Rider	36.938487°N 075.442920°W	01 September 2025
Wave Rider OLA6	Wave Rider	36.847484°N 075.275749°W	06 November 2025

Fisheries

Fisheries Resource Characterization Studies

Dominion Energy continues working with the Virginia Institute of Marine Science (VIMS), the Virginia Marine Resource Commission (VMRC), and commercial fishermen to study Black Sea Bass, Channeled Whelk, and Atlantic Surfclam resources within the project area.

- **Channeled Whelk:** This study uses eighteen (18) strings of seven (7) pots, a 48-hour soak time and recovery by acoustic release buoys. This cooperative study is conducted in partnership with local commercial whelk fishermen. The study area includes the southern portion of the CVOW Lease Area (with future turbine locations) and a control area outside the Lease Area. Field activity for this study is expected to continue through February of 2026.
- **Black Sea Bass:** This study, conducted once per month, consisted of eight (8) strings of ventless traps with 6 traps per string and a 48-hour soak time. Acoustic release buoys were utilized to recover the gear. **The pre-construction field activity for this study has been completed.**
- **Atlantic Surfclam:** The final report for the Atlantic Surfclam surveys that were conducted in June of 2023 has been published and is available on the CVOW Project website [here](#). This survey was a collaborative effort between VIMS, Rutgers University, VMRC, and Dominion Energy. **The pre-construction field activity for this study has been completed.**

Information derived from these studies can be found on the [CVOW Resources](#) page.

Recreational Fisheries and Public Access

- ***The OSS #2 and #3 locations will remain construction sites until commissioning activities are complete, no activity (e.g., fishing, diving, etc.) is permitted within 500-yards of the OSS structure.***
- Access to the Lease Area for recreational activities is unrestricted unless construction activities are active.
- A 500-yard USCG-enforced Safety Zone is in place when construction activities are occurring at the site of each WTG and/or OSS installation.
- If Mariners have questions about access, the onsite project safety vessels can provide direction via VHF Marine 16. Alternatively, mariners may reach out directly to the CVOW Marine Coordination Center (757-366-7000)

***** Mariners are reminded not to touch or tie off to MPs or OSSs and to remain vigilant for other vessels, including operational Project vessels, in the area. *****

CVOW Fisheries Compensatory Mitigation Program

The CVOW Fisheries Compensatory Mitigation Program has been established. The program is open to commercial and for-hire recreational fishing businesses that experience a demonstrated economic loss due to CVOW project construction and operations. Interested parties can find more information on the program website: <https://www.cvowfisheriescompensation.com/>.

Questions regarding eligibility or feedback on the structure of the program may be submitted to contact@cvowfisheriescompensation.com. Further details will be announced through direct outreach to potentially impacted parties, Mariner Updates, newsletters, and on the [CVOW Maritime Community Page](#).

Fishing Gear Loss/Damage Claim Form

Fishermen who have experienced lost or damaged fishing gear as a direct result of CVOW construction activities may file a claim for reimbursement. The Claim Form can be found [here](#). Questions should be directed to Ron Larsen or Michael Lewis.

Communications & Contact Information

We remain committed to maintaining communications with fishing communities and other mariners in the area via these periodic updates, informational speaking engagements and dock visits. This information is also posted on the CVOW website.

Mariners and the public are reminded that due to the nature of the construction activities, project vessels are often restricted in their ability to maneuver. It is requested that mariners communicate with project vessels on Channel 16 VHF to coordinate any necessary passing arrangements. Safety vessels will be on scene to assist with the coordination of commercial and public marine traffic and project vessels.

- Additional project information is available on the [CVOW project website](#).
- Sign up to receive USCG Local Notice to Mariners Updates: [Subscribe to Our RSS Feeds | Navigation Center \(uscg.gov\)](#)
- GIS Shapefiles of the project site are available on the [CVOW Mariners Page](#).
- USCG GIS-based LNM product to visualize project activities is available [here](#), announced in [this notice](#).

For additional information or requests for speaking engagements, please contact the following individuals or submit a comment on the CVOW website for response.

Ron Larsen
Fisheries Liaison Officer
Sea Risk Solutions
ronlarsen@searisksolutions.com
570-242-5023

Michael Lewis
CVOW Marine Affairs Manager
Dominion Energy
michael.b.lewis@dominionenergy.com
757-236-8222

Installed Components as of December 31, 2025

#	WTG ID	Coordinates	Foundation Installation Date	Scour Protection	Transition Piece
1	G2K04	36.869196°N 075.456227°W	22-May-24	✓	✓
2	G2J05	36.884680°N 075.442662°W	26-May-24	✓	✓

#	WTG ID	Coordinates	Foundation Installation Date	Scour Protection	Transition Piece
3	G2J04	36.884621°N 075.458216°W	28-May-24	✓	✓
4	G2J03	36.884560°N 075.473769°W	31-May-24	✓	✓
5	G2H05	36.900106°N 075.444659°W	4-Jun-24	✓	✓
6	G2H06	36.900163°N 075.429103°W	7-Jun-24	✓	✓
7	G2K03	36.869135°N 075.471777°W	8-Jun-24	✓	✓
8	G2J06	36.884737°N 075.427109°W	14-Jun-24	✓	✓
9	G2H04	36.900047°N 075.460216°W	16-Jun-24	✓	✓
10	G2H03	36.899985°N 075.475772°W	17-Jun-24	✓	✓
11	G2K05	36.869255°N 075.440677°W	18-Jun-24	✓	✓
12	G2G06	36.915589°N 075.431087°W	19-Jun-24	✓	✓
13	G2G05	36.915531°N 075.446646°W	20-Jun-24	✓	✓
14	G2F07	36.931061°N 075.417520°W	22-Jun-24	✓	✓
15	G2E07	36.946487°N 075.419502°W	23-Jun-24	✓	✓
16	G2F06	36.931005°N 075.433082°W	25-Jun-24	✓	✓
17	G2F03	36.930826°N 075.479770°W	26-Jun-24	✓	✓
18	G2G03	36.915410°N 075.477765°W	28-Jun-24	✓	✓
19	G2F04	36.930888°N 075.464208°W	29-Jun-24	✓	✓
20	G2F05	36.930947°N 075.448645°W	1-Jul-24	✓	✓
21	G2E06	36.946431°N 075.435068°W	2-Jul-24	✓	✓
22	G2E05	36.946373°N 075.450634°W	3-Jul-24	✓	✓
23	G2E03	36.946250°N 075.481765°W	4-Jul-24	✓	✓
24	G2D06	36.961856°N 075.437065°W	5-Jul-24	✓	✓
25	G2D04	36.961737°N 075.468203°W	6-Jul-24	✓	✓
26	G2C05	36.977382°N 075.455728°W	9-Jul-24	✓	✓
27	G2D05	36.961798°N 075.452634°W	10-Jul-24	✓	
28	G2D07	36.961912°N 075.421496°W	13-Jul-24	✓	✓
29	G2D08	36.961966°N 075.405927°W	14-Jul-24	✓	✓
30	G2B06	36.992697°N 075.441051°W	15-Jul-24	✓	✓
31	G2C07	36.977338°N 075.423486°W	16-Jul-24	✓	✓
32	G2C06	36.977281°N 075.439052°W	17-Jul-24	✓	✓
33	G2E08	36.946541°N 075.403936°W	19-Jul-24	✓	✓
34	G2B07	36.992754°N 075.425476°W	20-Jul-24	✓	✓

#	WTG ID	Coordinates	Foundation Installation Date	Scour Protection	Transition Piece
35	G2D09	36.962019°N 075.390358°W	21-Jul-24	✓	✓
36	G2F08	36.931114°N 075.401957°W	22-Jul-24	✓	✓
37	G2G08	36.915697°N 075.399967°W	22-Jul-24	✓	✓
38	G2G04	36.915697°N 075.399967°W	25-Jul-24	✓	✓
39	G2D11	36.962117°N 075.359220°W	28-Jul-24	✓	✓
40	G2E11	36.946690°N 075.357238°W	29-Jul-24	✓	✓
41	G2D10	36.962069°N 075.374789°W	29-Jul-24	✓	✓
42	G2E09	36.946592°N 075.388370°W	31-Jul-24	✓	✓
43	G2H08	36.900271°N 075.397990°W	2-Aug-24	✓	✓
44	G2F11	36.931263°N 075.355268°W	3-Aug-24	✓	✓
45	G2F10	36.931216°N 075.370831°W	4-Aug-24	✓	✓
46	G2G10	36.915798°N 075.368848°W	5-Aug-24	✓	✓
47	G2F09	36.931166°N 075.386394°W	6-Aug-24	✓	✓
48	G2G09	36.915749°N 075.384408°W	7-Aug-24	✓	✓
49	G2J07	36.884792°N 075.411556°W	10-Aug-24	✓	✓
50	G2H09	36.900322°N 075.382433°W	11-Aug-24	✓	✓
51	G2J09	36.884896°N 075.380449°W	12-Aug-24	✓	✓
52	G2K09	36.869469°N 075.378476°W	12-Aug-24	✓	✓
53	G2K08	36.869419°N 075.394026°W	13-Aug-24	✓	✓
54	G2K07	36.869366°N 075.409577°W	14-Aug-24	✓	✓
55	G3H12	36.900463°N 075.335763°W	18-Aug-24	✓	✓
56	G2K10	36.869518°N 075.362926°W	21-Aug-24	✓	✓
57	G2H07	36.900218°N 075.413546°W	21-Aug-24	✓	✓
58	G2K06	36.869311°N 075.425127°W	22-Aug-24	✓	✓
59	G3H13	36.900506°N 075.320207°W	23-Aug-24	✓	✓
60	G3J13	36.885079°N 075.318235°W	23-Aug-24	✓	✓
61	G3G11	36.915845°N 075.353288°W	25-Aug-24	✓	✓
62	G3J12	36.885036°N 075.333788°W	26-Aug-24	✓	✓
63	G3H14	36.900547°N 075.304650°W	26-Aug-24	✓	✓
64	G3G14	36.915975°N 075.306609°W	27-Aug-24	✓	✓
65	G3G13	36.915934°N 075.322169°W	28-Aug-24	✓	✓
66	G3G12	36.915891°N 075.337728°W	29-Aug-24	✓	✓
67	G2E04	36.946312°N 075.466199°W	31-Aug-24	✓	✓
68	G2E10	36.946642°N 075.372804°W	1-Sep-24	✓	✓

#	WTG ID	Coordinates	Foundation Installation Date	Scour Protection	Transition Piece
69	G3F12	36.931309°N 075.339705°W	2-Sep-24	✓	✓
70	G3F13	36.931352°N 075.324142°W	8-Sep-24	✓	✓
71	G3C13	36.977634°N 075.330046°W	9-Sep-24	✓	✓
72	G3B12	36.993008°N 075.347599°W	11-Sep-24	✓	✓
73	G3C14	36.977677°N 075.314474°W	12-Sep-24	✓	✓
74	G3E13	36.946780°N 075.326106°W	12-Sep-24	✓	✓
75	G3D12	36.962163°N 075.343650°W	13-Sep-24	✓	✓
76	G3E14	36.946821°N 075.310540°W	19-Sep-24	✓	✓
77	G3D13	36.962207°N 075.328081°W	20-Sep-24	✓	✓
78	G3B14	36.993095°N 075.316448°W	23-Sep-24	✓	✓
79	G1K14	36.869691°N 075.300724°W	2-May-25	✓	
80	G1K15	36.869730°N 075.285173°W	4-May-25	✓	
81	G1K12	36.869609°N 075.331825°W	5-May-25		
82	G1K13	36.869651°N 075.316274°W	7-May-25	✓	
83	G1K19	36.869863°N 075.222971°W	8-May-25	✓	
84	G1M18	36.838983°N 075.234624°W	11-May-25	✓	
85	G1K18	36.869832°N 075.238522°W	12-May-25	✓	
86	G1M19	36.839013°N 075.219079°W	13-May-25	✓	
87	G1L16	36.854350°N 075.267667°W	16-May-25	✓	
88	G1L19	36.854442°N 075.221019°W	18-May-25	✓	
89	G1K17	36.869800°N 075.254072°W	19-May-25	✓	
90	G1L18	36.854412°N 075.236567°W	20-May-25	✓	
91	G1L13	36.854232°N 075.314304°W	23-May-25		
92	G1K11	36.869564°N 075.347375°W	24-May-25	✓	
93	G1L15	36.854310°N 075.283209°W	25-May-25	✓	
94	G1M17	36.838951°N 075.250168°W	26-May-25	✓	
95	G1N11	36.823291°N 075.341459°W	27-May-25		
96	G1L14	36.854272°N 075.298757°W	28-May-25	✓	
97	G3J17	36.885229°N 075.256020°W	30-May-25		✓
98	G1K16	36.869766°N 075.269623°W	2-Jun-25	✓	
99	G1N17	36.823522°N 075.248212°W	1-Jun-25		
100	G1L12	36.854190°N 075.329851°W	2-Jun-25		
101	G1N18	36.823554°N 075.232671°W	3-Jun-25	✓	
102	G1N19	36.823583°N 075.217129°W	4-Jun-25	✓	

#	WTG ID	Coordinates	Foundation Installation Date	Scour Protection	Transition Piece
103	G3B15	36.993136°N 075.300872°W	6-Jun-25	✓	✓
104	G3B16	36.993174°N 075.285297°W	7-Jun-25	✓	✓
105	G3B17	36.993210°N 075.269721°W	8-Jun-25	✓	✓
106	G3C16	36.977755°N 075.283329°W	9-Jun-25	✓	✓
107	G3B18	36.993245°N 075.254145°W	9-Jun-25		✓
108	G3E18	36.946968°N 075.248275°W	10-Jun-25		✓
109	G3D16	36.962327°N 075.281373°W	3-Jul-25	✓	✓
110	G3F15	36.931433°N 075.293016°W	4-Jul-25	✓	✓
111	G3G18	36.916119°N 075.244369°W	5-Jul-25	✓	✓
112	G3F17	36.931506°N 075.261890°W	5-Jul-25	✓	✓
113	G3G19	36°54.969'N 075°13.729'W	6-Jul-25		
114	G3E16	36.946900°N 075.279400°W	8-Jul-25	✓	✓
115	G3F14	36.931394°N 075.308579°W	10-Jul-25	✓	✓
116	G3F18	36.931539°N 075.246327°W	11-Jul-25		✓
117	G3F19	36.931570°N 075.230764°W	11-Jul-25		
118	G3F16	36.931471°N 075.277453°W	11-Jul-25	✓	✓
119	G3E17	36.946934°N 075.263841°W	18-Jul-25	✓	✓
120	G3D19	36.962428°N 075.234665°W	18-Jul-25		
121	G3D18	36.962397°N 075.250234°W	19-Jul-25	✓	✓
122	G3C20	36.977887°N 075.221039°W	20-Jul-25	✓	
123	G3D20	36.962458°N 075.219096°W	20-Jul-25		
124	G3C18	36.977825°N 075.252184°W	23-Jul-25		✓
125	G3D14	36.962250°N 075.312517°W	24-Jul-25	✓	✓
126	G3C17	36.977791°N 075.267756°W	24-Jul-25	✓	✓
127	G3C12	36.977590°N 075.345619°W	25-Jul-25	✓	✓
128	G3C19	36.977857°N 075.236611°W	26-Jul-25	✓	
129	G3B13	36.993050°N 075.332017°W	26-Jul-25	✓	✓
130	G3E15	36.946867°N 075.294967°W	28-Jul-25	✓	✓
131	G3D17	36.962363°N 075.265804°W	28-Jul-25	✓	✓
132	G3G17	36.916086°N 075.259929°W	29-Jul-25	✓	✓
133	G3H16	36.900623°N 075.273536°W	30-Jul-25	✓	✓
134	G3G16	36.916051°N 075.275489°W	1-Aug-25	✓	✓

#	WTG ID	Coordinates	Foundation Installation Date	Scour Protection	Transition Piece
135	G1L17	36.854380°N 075.252114°W	5-Aug-25		
136	G3H17	36.900650°N 075.257983°W	5-Aug-25		
137	G3H19	36.900721°N 075.226866°W	6-Aug-25		
138	G1N16	36.823489°N 075.263753°W	10-Aug-25		
139	G3J16	36.885200°N 075.271567°W	10-Aug-25	✓	✓
140	G1N15	36.823450°N 075.279300°W	11-Aug-25		
141	G3J19	36.885292°N 075.224912°W	12-Aug-25		✓
142	G3J18	36.885267°N 075.240467°W	13-Aug-25		✓
143	G1M15	36.838882°N 075.281257°W	13-Aug-25		
144	G1M16	36.838918°N 075.265713°W	14-Aug-25		
145	G3J15	36.885150°N 075.287133°W	16-Aug-25	✓	✓
146	G1N14	36.823416°N 075.294835°W	17-Aug-25		
147	G1L08	36.854000°N 075.392033°W	17-Aug-25		
148	G1N13	36.823376°N 075.310376°W	26-Aug-25		
149	G1M12	36.838763°N 075.327890°W	27-Aug-25		
150	G1L09	36.854052°N 075.376493°W	27-Aug-25		
151	G1M14	36.838844°N 075.296801°W	28-Aug-25		
152	G1M08	36.838575°N 075.390066°W	29-Aug-25		
153	G1N12	36.823335°N 075.325918°W	31-Aug-25		
154	G1L10	36.854100°N 075.360946°W	2-Sep-25		
155	G1N08	36.823148°N 075.388082°W	3-Sep-25		
156	G1M09	36.838625°N 075.374522°W	3-Sep-25		
157	G1L06	36.853895°N 075.423135°W	4-Sep-25		
158	G1L05	36.853838°N 075.438682°W	5-Sep-25		
159	G1L07	36.853949°N 075.407587°W	5-Sep-25		
160	G1M04	36.838355°N 075.452242°W	6-Sep-25		
161	G1L04	36.853780°N 075.454229°W	7-Sep-25		
162	G1N10	36.823246°N 075.357000°W	12-Sep-25		
163	G1L03	36.853719°N 075.469776°W	12-Sep-25		
164	G1M10	36.838673°N 075.358978°W	13-Sep-25		
165	G1N09	36.823198°N 075.372541°W	14-Sep-25		
166	G1N07	36.823096°N 075.403623°W	14-Sep-25		

#	WTG ID	Coordinates	Foundation Installation Date	Scour Protection	Transition Piece
167	G1M11	36.838719°N 075.343434°W	18-Sep-25		
168	G1N06	36.823043°N 075.419163°W	19-Sep-25		
169	G1N03	36.822869°N 075.465786°W	24-Sep-25		
170	G1M03	36.838294°N 075.467786°W	25-Sep-25		
171	G1N05	36.822987°N 075.434704°W	26-Sep-25		
172	G1M06	36.838469°N 075.421154°W	26-Sep-25		
173	G1M13	36.838804°N 075.312345°W	27-Sep-25		
174	G1M05	36.838413°N 075.436698°W	29-Sep-25		
175	G1M07	36.838523°N 075.40561°W	7-Oct-25		
176	G1N04	36.822929°N 075.450245°W	7-Oct-25		
Offshore Substations (OSS)					
1	OSS #1	36.854146°N 075.345399°W	21 June 2025	Pin Piles Only	
2	OSS #2	36.915644°N 075.415527°W	21 June 2025	Pin Piles, Jacket & Topside	
3	OSS #3	36.916014°N 075.291049°W	26 October 2025	Pin Piles, Jacket & Topside	